

WORKHOLDING COMPONENTS

Workholding Components

Adjustable Clamp Heels.....	278	Revolving Clamp Assemblies, Long Bushing Type.....	244
Adjustable Clamp Rests	277	Revolving Clamp Assemblies, Short Bushing Type.....	244
Adjustable Step Blocks	288	Revolving Clamp Base.....	244
Assemblies, Spherical Flange	265	Rod Ends	247
Bolts, Dovetail.....	263	Screw, Half Turn	248
Bolts, Swing	246	Screws, Hand Knob	242
Bolts, T.....	263	Screws, Quarter Turn	248
Bolts, T-Slot.....	262	Screws, Thumb.....	249
Bolts, T-Strap	258	Set-Up Kits, Die	290
Clamp Assemblies, Double Cam	240	Set-Up Kits	289–290
Clamp Assemblies, Flange Nut.....	239	Single Cams	243
Clamp Assembly, Heel Pad	238	Step Blocks	288
Clamp Assemblies, Hook	245	Strap Pads	243
Clamp Assemblies, Knob	241	Straps, Heel.....	287
Clamp Assemblies, Miniature Flat	238	Straps, Miniature Flat	277
Clamp Assemblies, Miniature Radius.....	238	Straps, Miniature Radius.....	277
Clamp Assemblies, Radius End Flange Nut.....	239	Straps, Padded.....	279
Clamp Assemblies, Radius Swing.....	239	Straps, Plain	278
Clamp Assemblies	238–241, 244–245	Straps, Radius.....	281
Clamp Rests	242	Straps, Slotted Radius	281
Clamping Kits.....	290	Straps, Taper Nose.....	283
Clevis Pins	257	Straps, Tapped	282
Collars, Steel Shaft	258	Studs, Alloy Steel.....	259–260
Double Cams	243	Studs, Fixture	261
Finger Handles.....	242	Studs, Set-Up.....	261
Forged Adjustable Clamp.....	286	Studs	259–261
Forged Straps, U Clamp	285	Tee Strap Bolts	258
Forged Straps, Finger Clamp	285	Toe Clamp, Kits	291–292
Forged Straps, Gooseneck Clamp.....	284	Toe Clamps, Large	292
Forged Straps, Heel Clamp.....	284	Toe Clamps, Small	291
Guide Blocks.....	242	Toggle Pads	252
Replaceable Grippers	275–276	Toggle Screws, Adjustable Torque	250
Tapered Hardened Steel	275–276	Toggle Screws, Hand Knob.....	250
Tapered Carbide Steel.....	275	Toggle Screws, Socket Toggle.....	251
Leveling Mounts	255	Toggle Screws, Thumb	251
Leveling Pads	253–254	U-Straps, Long Slot	280
Nuts, Acorn	268	Washers, “C”	271
Nuts, Check.....	267	Washers, Equalizing “C”	271
Nuts, Coupling	267	Washers, Equalizing Swing “C” Assembly	272
Nuts, Equalizing Hex Head	266	Washers, Equalizing Swing “C”	271
Nuts, Flange.....	264	Washers, Flat	270
Nuts, Heavy Duty Hex	265	Washers, Heavy Duty Flat.....	270
Nuts, Knurled Equalizing	268	Washers, Heavy Duty Square.....	272
Nuts, Knurled Lock.....	267	Washers, Self Aligning.....	273
Nuts, Spherical Flange	266	Washer, USAE	274
Nuts, Stainless Steel.....	268	Yokes.....	256–257
Nuts, T-Slot.....	269		
Plastic Pad Covers	251		

Jergens[®]

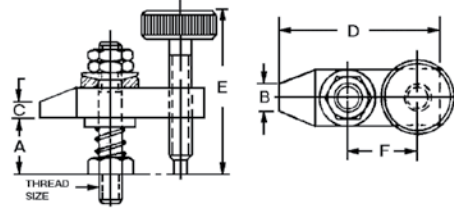
MANUFACTURING EFFICIENCY



Clamp Assemblies Miniature Flat



Fast-acting clamp for light-duty holding. Includes strap, knurled thumb screw, spherical washer, stud, plain flat washer, three hex jam nuts and spring. Features free swinging adjustments for positioning the assembly without interference.

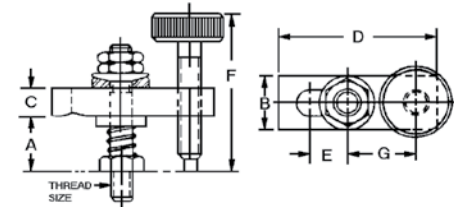


Part Number	A	B	C	D	E	F	Thread Size	Wt. (lbs)
12901	5/8	1/4	1/8	1 1/2	1 9/16	11/16	10-24	.19
12902	5/8	1/4	1/8	2	1 9/16	15/16	1/4-20	.22
12903	9/16	1/4	1/8	2 1/2	1 9/16	1 3/16	1/4-20	.25

Miniature Radius

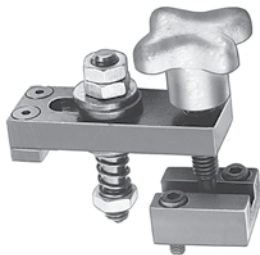


A light-duty clamp assembly for clamping close to the edge. Complete with radius strap, double jam nuts with spherical washers, finger tip, quick-action knurled thumb screw heel rest, stud, spring and washer. The latter allows free swinging and lateral adjustments for easier set-ups.

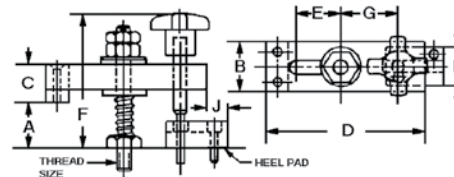


Part Number	A	B	C	D	E	F	G	Thread Size	Wt. (lbs)
13101	1/2	1/2	1/4	1 1/2	7/16	1 9/16	9/16	10-24	.20
13102	1/2	1/2	1/4	1 3/4	9/16	1 9/16	11/16	10-24	.22
13103	1/2	1/2	1/4	2	11/16	1 9/16	13/16	10-24	.24

Heel Pad



In one movement this clamp assembly can be moved into place and tightened; recommended where hand pressure clamping is suitable for the application.

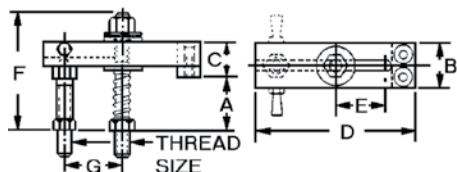
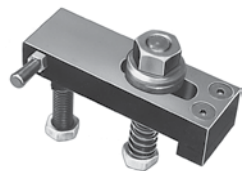


Part Number	A	B	C	D	E	F	G	H	Heel Pad	J	Thread Size	Wt. (lbs)
13301	5/8	5/8	1/2	2	5/8	1 15/16	25/32	3/4	13701	1/2	1/4-20	.38
13312	9/16	7/8	11/16	2 1/2	3/4	2 9/16	15/16	1	13703	5/8	5/16-18	.69
13306	13/16	1 1/4	7/8	3 1/2	1	2 7/8	1 7/16	1	13703	1/2	3/8-16	1.38
13308	13/16	1 1/4	7/8	4 1/2	1 5/8	2 7/8	1 13/16	1	13703	1/2	3/8-16	1.68
13313	1 1/4	1 1/2	1	4 1/2	1 1/4	3 7/8	1 15/16	1 1/2	13705	1 1/8	1/2-13	2.20

WORKHOLDING COMPONENTS



Clamp Assemblies Flange Nut



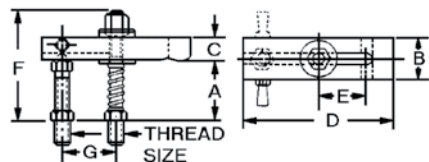
Use where great clamping pressures are needed and vibration is a problem.

Heavy-duty clamping with spherical flange nut and spherical washer for greater flexibility. Extra long, true milled slot allows more clearance for placing and removing work. Brass and plastic pads are available, see page 243.

Part Number	A	B	C	D	E	F	G*	Thread Size	Wt. (lbs)
12701†	3/4	5/8	1/2	2	5/8	1 5/8	7/8	1/4-20	.27
12703	1 1/2	1 1/4	7/8	3 1/2	1 1/8	2 15/16	1 7/16	3/8-16	1.12
12705	1 1/2	1 1/4	7/8	4 1/2	1 5/8	2 15/16	1 15/16	3/8-16	1.38
12707	1 1/8	1 1/2	1 1/8	4 1/2	1 1/4	3	2 1/8	1/2-13	2.12
12710	1 1/8	1 1/2	1 1/8	6	2	3	2 7/8	1/2-13	2.62
12711	2 5/8	1 3/4	1 3/8	5	1 1/2	5 1/16	2 1/8	5/8-11	3.50
12713	2 5/8	1 3/4	1 3/8	7	2 1/2	5 1/16	3 1/8	5/8-11	4.12
12714	1 3/4	1 3/4	1 1/2	5	1 1/2	4 3/8	2 1/8	3/4-10	4.12
12716	1 3/4	1 3/4	1 1/2	7	2 1/2	4 3/8	3 1/8	3/4-10	4.87

*G dimension represents an optimum dimension.
† Does not include finger handle. See page 242.

Radius End Flange Nut

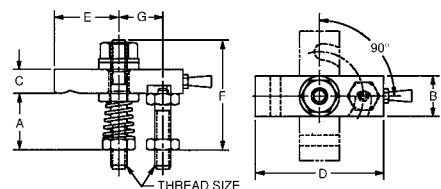


Heavy-duty clamping of plain surfaces with spherical flange nut and spherical washer for angular flexibility. Long, true milled slot allows greater clearance for placing and removing work. Spring-loaded stud for quick release.

Part Number	A	B	C	D	E	F	G*	Thread Size	Wt. (lbs)
14103†	7/8	5/8	3/8	2	5/8	1 5/8	7/8	1/4-20	.25
14104†	7/8	5/8	3/8	2 1/2	1	1 5/8	7/8	1/4-20	.28
14117†	1 1/8	7/8	1/2	2 1/2	3/4	2 1/4	15/16	5/16-18	.75
14118†	1 1/8	7/8	1/2	3 1/2	1 1/4	2 1/4	15/16	5/16-18	.85
14105	1 3/4	1 1/4	5/8	3 1/2	1 1/8	2 15/16	1 7/16	3/8-16	1.10
14119	1 3/4	1 1/4	5/8	4 1/2	1 5/8	2 15/16	1 7/16	3/8-16	1.20
14108	1 1/2	1 1/2	3/4	4 1/2	1 1/4	3	1 7/8	1/2-13	2.00
14110	1 1/2	1 1/2	3/4	6	1 1/2	3	1 7/8	1/2-13	2.44
14111	3 1/8	1 3/4	7/8	5	1 1/2	5 1/16	2	5/8-11	3.25
14113	3 1/8	1 3/4	7/8	7	2 1/2	5 1/16	2	5/8-11	3.88
14114	2 1/4	1 3/4	1	5	1 1/2	4 3/8	2 1/8	3/4-10	3.88
14116	2 1/4	1 3/4	1	7	2 1/2	4 3/8	2 1/8	3/4-10	4.85

*G dimension represents an optimum dimension.
† Does not include finger handle. See page 242.

Radius Swing Clamp



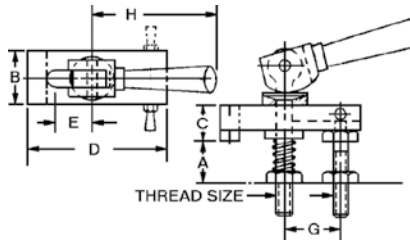
Features fast-action, light-duty holding of plain surface work where quick movements are required in a restricted space. Radial milled slots allows for 90° swing. Ideally suited for placing and removing workpiece.

Part Number	Thread Size	A	B	C	D	E	F	G	Wt. (lbs)
14123*	1/4-20	7/8	5/8	3/8	2	1	1 5/8	11/16	.25
14125	3/8-16	1 3/4	1 1/4	5/8	3 1/2	1 1/2	2 15/16	1 1/4	1.10
14128	1/2-13	1 1/2	1 1/2	3/4	4 1/2	1 13/16	3	1 15/16	2.00
14131	5/8-11	3 1/8	1 3/4	7/8	5	2 1/16	5 1/16	2 3/16	3.25
14134	3/4-10	2 1/4	1 3/4	1	5	2 1/16	4 3/8	2 3/16	3.88

*Does not include finger handle. See page 242.



Clamp Assemblies Double Cam



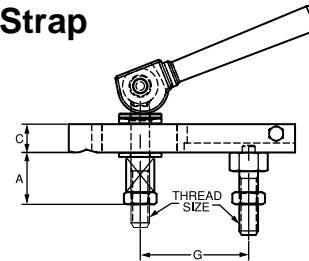
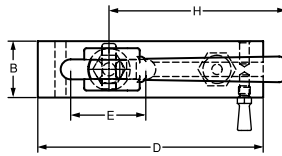
Features fast-action, light-duty holding of plain surface work where quick movements are required in a restricted space. Long end slot for lateral adjustment. Spring-loaded stud member under sturdy double-cam lever. Plastic and brass pads available for protecting workpiece, see page 243.

Part Number	A	B	C	D	E	G*	H	Thread Size	Wt. (lbs)
12501†	5/8	5/8	1/2	2	5/8	7/8	2 1/2	1/4-20	.40
12502	1 5/16	1 1/4	7/8	3 1/2	1 1/8	1 7/16	3 7/16	3/8-16	1.50
12503	1	1 1/2	1 1/8	4 1/2	1 1/4	1 7/8	5	1/2-13	3.00
12504	2 1/8	1 3/4	1 3/8	5	1 1/2	1 15/16	5 1/16	5/8-11	4.70

*G dimension represents an optimum dimension.

† Does not include finger handle. See page 242.

Double Cam Clamp Assemblies W/Radius Nose Strap



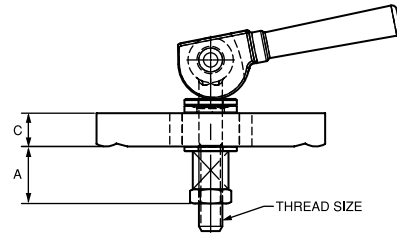
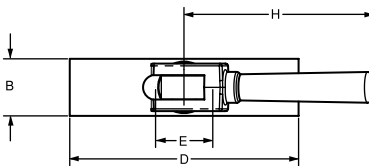
Same fast-action as Standard Double Cam Clamp but with a radius strap.

Part Number	A	B	C	D	E	G*	H	Thread Size	Wt. (lbs)
12511†	3/4	5/8	3/8	2	5/8	7/8	2 1/2	1/4-20	0.35
12512†	3/4	5/8	3/8	2 1/2	1	7/8	2 1/2	1/4-20	0.40
12513†	1 1/8	7/8	1/2	2 1/2	3/4	1 1/4	3 7/16	5/16-18	1.25
12514†	1 1/8	7/8	1/2	3 1/2	1 1/4	1 1/4	3 7/16	5/16-18	1.40
12515	1 1/2	1 1/4	5/8	3 1/2	1 1/8	1 7/16	3 7/16	3/8-16	1.50
12516	1 1/2	1 1/4	5/8	4 1/2	1 5/8	1 7/16	3 7/16	3/8-16	1.80
12517	1 3/8	1 1/2	3/4	4 1/2	1 1/4	1 7/8	5	1/2-13	3.00
12518	1 3/8	1 1/2	3/4	6	2	1 7/8	5	1/2-13	3.40
12519	1 5/8	1 3/4	7/8	5	1 1/2	1 15/16	5 1/16	5/8-11	4.70

*G dimension represents an optimum dimension.

† Does not include finger handle. See page 242.

Double Cam Clamp Assemblies W/Double End Radius Nose Strap

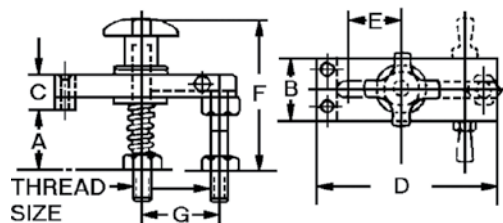


Double Cam Clamp featuring a radius at both ends of the strap.

Part Number	A	B	C	D	E	H	Thread Size	Wt. (lbs)
12523	1 3/8	1 1/2	3/4	4	1 1/4	5	1/2-13	2.50
12524	1 3/8	1 1/2	3/4	5	1 1/4	5	1/2-13	3.00
12526	1 5/8	1 5/8	7/8	6	1 1/2	5 1/16	5/8-11	5.30



Clamp Assemblies Knob



Designed for light-duty clamping, the hand knob eliminates wrenching for faster work changes. Spherical washer allows for clamping irregular surfaces.

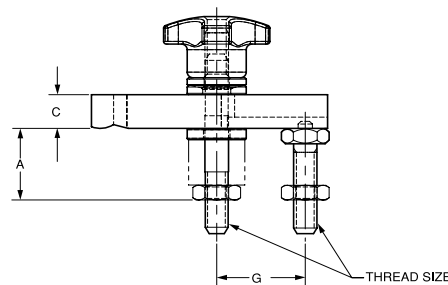
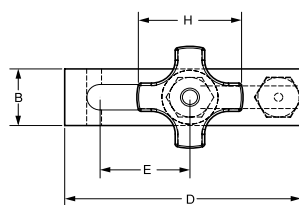
- Interchangeable pad option
- Steel pad standard, brass and plastic pads are available, see page 243
- Pads machinable to part configuration

Part Number	A	B	C	D	E	F	G*	Thread Size	Wt. (lbs)
13501†	3/4	5/8	1/2	2	5/8	2 5/16	1	1/4-20	.35
13503	1 1/2	1 1/4	7/8	3 1/2	1 1/8	3 19/32	1 7/16	3/8-16	1.22

*G dimension represents an optimum dimension.

† Does not include finger handle. See page 242.

Knob Clamp Assemblies w/Radius Nose Strap



Part Number	A	B	C	D	E	G*	H	Thread Size	Wt. (lbs)
13512†	7/8	5/8	3/8	2 1/2	1	2 1/4	7/8	1/4-20	.32
13515	1 3/4	1 1/4	5/8	3 1/2	1 1/8	3 1/2	1 7/16	3/8-16	1.10
13516	1 3/4	1 1/4	5/8	4 1/2	1 5/8	3 1/2	1 7/16	3/8-16	1.30

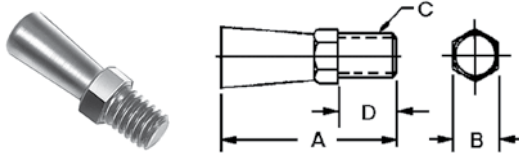
*G dimension represents an optimum dimension.

† Does not include finger handle. See page 242.



Clamp Assemblies Components

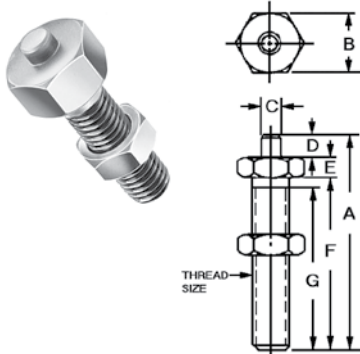
Finger Handles



Part Number	A	B	C	D	Wt. (lbs) 10 Pcs.
19501	3/4	1/4	10-32	1/4	.08
19502	1 3/16	3/8	5/16-18	5/16	.31

- Material: Low Carbon Steel
- Finish: Black Oxide

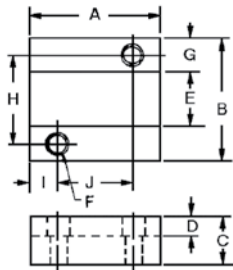
Clamp Rests



Part Number	A	B	C	D	E	F	G	Thread Size	Wt. (lbs) 10 Pcs.
21301	3/4	3/8	5/32	5/64	11/64	1/2	13/32	10-24	.19
21302	1 1/4	7/16	5/32	5/64	11/64	1	29/32	1/4-20	.22
21307	1 7/8	1/2	7/32	3/16	7/32	1 15/32	1 5/16	5/16-18	.60
21308	3 1/4	1/2	7/32	3/16	7/32	2 27/32	2 11/16	5/16-18	1.25
21303	2 1/2	9/16	11/32	5/32	11/32	2	1 13/16	3/8-16	.70
21313	3 7/8	9/16	11/32	5/32	11/32	3 3/8	3 3/16	3/8-16	2.80
21304	2 3/8	7/8	11/32	3/16	1/2	1 11/16	1 1/2	1/2-13	1.88
21314	3 7/8	7/8	11/32	3/16	1/2	3 3/16	3	1/2-13	3.50
21315	2 5/8	7/8	11/32	3/16	1/2	1 15/16	1 11/16	5/8-11	2.25
21305	3 27/32	7/8	11/32	3/16	1/2	3 5/32	2 15/16	5/8-11	3.60
21316	2 3/4	7/8	11/32	3/16	1/2	2 1/16	1 7/8	3/4-10	2.75
21306	3 1/2	7/8	11/32	3/16	1/2	2 13/16	2 3/8	3/4-10	4.70

- Material: Low Carbon Steel
- Finish: Black Oxide
- Heat Treat: Case Hardened
- Thread: 2A-UNC

Clamp Assembly Guide Blocks



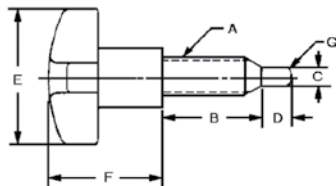
Part Number	A	B	C	D	E	Soc. Hd. Cap F	G	H	I	J	Wt. (lbs) 10 Pcs.
13701	7/8	3/4	5/16	1/8	7/32	5-40	1/8	1/2	3/16	1/2	.06
13703	1 1/8	1	1/2	3/16	9/32	8-32	3/16	5/8	1/4	5/8	.12
13705	1 5/8	1 1/2	5/8	1/4	13/32	1/4-20	1/4	1	3/8	7/8	.38

- Material: Low Carbon Steel
- Finish: Black Oxide
- Heat Treat: Case Hardened 74-77 R30N
- Mounting Screws Supplied with Heel.

Hand Knob Screws



- Material: Stem, Stressproof® Head, Cast Iron
- Finish: Stem, Black Oxide Head, Zinc Plate
- Thread: 2A-UNC

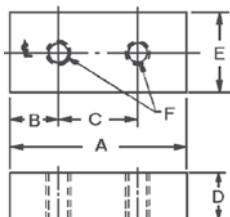


Part Number	A	B	C	D	E	F	Radius G	Wt. (lbs) 10 Pcs.
13901	1/4-20	3/4	11/64	1/4	1 1/8	7/8	1/8	.78
13902	5/16-18	1 1/16	7/32	5/16	1 1/2	1	1/4	1.57
13903	3/8-16	1 3/16	1/4	5/16	2	1 1/8	1/4	1.87
13904	1/2-13	1 5/8	3/8	3/8	2 1/2	1 1/2	3/8	4.00
13905	5/8-11	1 3/4	15/32	3/8	3	2	3/8	12.50

Designed for applications where thumb screws are too light, and a heavier, larger unit is needed. Cast iron knob, dog point end.



Strap Pads-Steel, Plastic & Brass



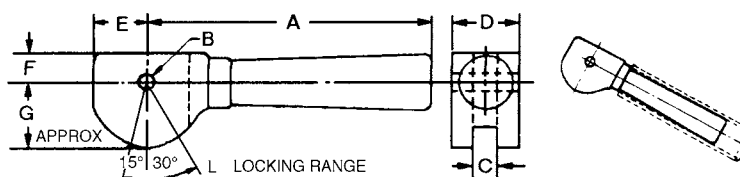
- Material: Steel, Low Carbon Steel
Plastic, Paper Filled Bakelite
Brass
- Finish: Steel Pad Only, Black Oxide
- Heat Treat: Steel Pad Only,
Case Hardened 74-77 R30N

Plastic Pads

Resistant to oil and cutting fluids, allows high clamping pressures, yet protects the soft materials from being scratched or marred.

Steel Pads		Plastic Pads		Brass Pads		A	B	C	D	E	F
Part Number	Wt. (lbs) 10 Pcs.	Part Number	Wt. (lbs) 10 Pcs.	Part Number	Wt. (lbs) 10 Pcs.						
17101	.05	17102	.02	17103	.06	5/8	9/64	11/32	1/8	1/4	5-40
17104	.16	17105	.03	17106	.18	7/8	3/16	1/2	3/16	3/8	8-32
17107	.40	17108	.08	17109	.43	1 1/4	5/16	5/8	1/4	1/2	10-24
17110	.90	17111	.16	17112	.93	1 1/2	3/8	3/4	3/8	5/8	1/4-20
17113	1.50	—	—	—	—	1 3/4	1/2	3/4	1/2	3/4	1/4-20

Double Cams



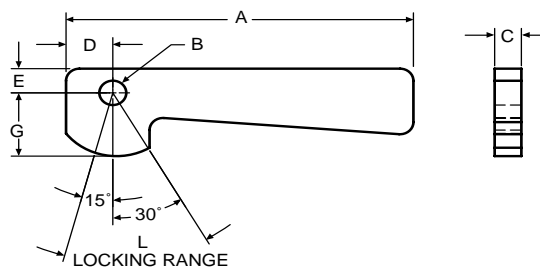
Forged, heat-treated for abrasion-resistance and longer life. Designed for quick change clamping which requires greater holding pressures than are available with single cams. Mean clamping point pressure angle is from 3 1/2' to 4', which makes for stronger workholding.

Slip standard pipe over handle for more leverage. Snug fit at handle collar and end.

- Finish: Black Oxide
- Material: C1020
- Heat Treat: Case Hardened 74-77 R30N

Part Number	A	B	C	D	E	F	G	L	Wt. (lbs)
18101	2 1/2	3/16	17/64	5/8	3/8	1/4	.437	.015	.14
18102	3 7/16	5/16	25/64	7/8	19/32	23/64	.679	.019	.34
18103	5	3/8	33/64	1 1/8	5/8	15/32	.755	.031	.83
18104	5 1/16	5/8	41/64	1 1/4	7/8	5/8	1.040	.043	1.00

Single Cams



- Finish: Black Oxide
- Material: 1018
- Heat Treat: Case Hardened Rc 58-62

Part Number	A	B	C	D	E	G	L	Wt. (lbs)
12101	2 3/8	5/32	3/16	3/8	3/16	17/32	.015	0.62
12102	3 1/4	1/4	1/4	7/16	1/4	21/32	.022	1.40
12103	4 1/2	5/16	3/8	3/4	3/8	29/32	.031	4.00
12104	5	3/8	1/2	7/8	7/16	1 5/64	.031	6.90

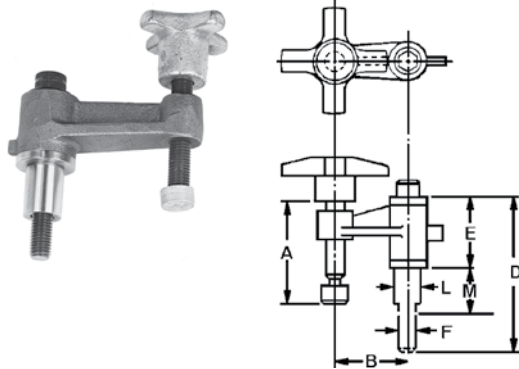


Revolving Clamp Assemblies

Quick hold-down of workpiece with hand tightening, then loosen and revolve out of the way. Saves time for moderate-duty clamping.

Malleable cast iron body. Case-hardened swivel pad uses "tru-center" feature to maintain even, in-line pressure on workpiece.

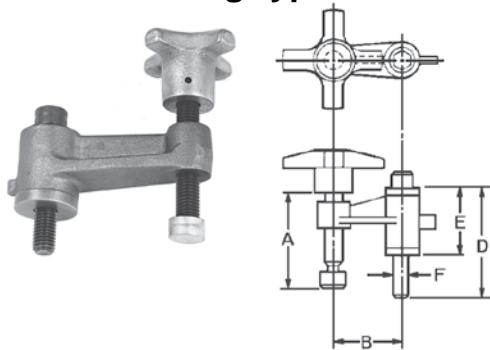
Long Bushing Type



- Body Material: Malleable ASTM A47, GR32510
- Finish: Black Oxide
- Bushings: Hardened & Ground Rc 56-60

Part Number	A	B	D	E	F	L	M	Wt. (lbs)
						.5610/		
35119	2	1 1/2	3	1 1/2	5/16-18	.5595	5/8	0.8
						.6235/		
35103	2	1 1/2	3 1/4	1 1/2	3/8-16	.6220	3/4	0.8
						.8735/		
35116	3 3/8	3	5	2 1/4	1/2-13	.8720	1 1/4	4.5
						1.1235/		
35106	3 3/4	3	5	2 1/4	5/8-11	1.1220	1 1/2	4.8
						1.1235/		
35109	3 3/4	4	5	2 1/4	5/8-11	1.1220	1 1/2	5.0

Short Bushing Type

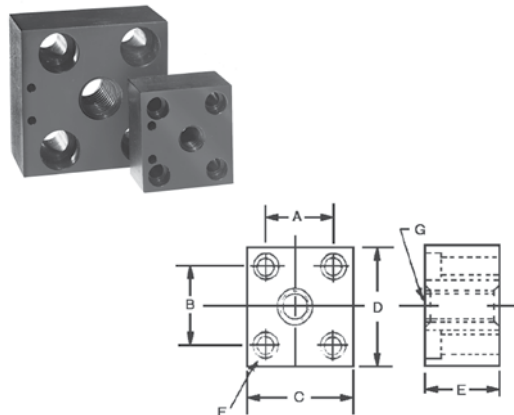


- Body Material: Malleable ASTM A47, GR32510
- Finish: Black Oxide
- Bushings: Hardened & Ground Rc 56-60

Part Number		A	B	D	E	F	Wt. (lbs)	Base Part Number
Clamp Only	Clamp w/ Base							
35117	35118	2	1 1/2	2	1 1/2	5/16-18	0.7	35113
35101	35102	2	1 1/2	3 1/4	1 1/2	3/8-16	0.7	35110
35114	35115	3 3/8	3	5	2 1/4	1/2-13	4.3	35112
35104	35105	3 3/4	3	3	2 1/4	5/8-11	4.5	35111
35107	35108	3 3/4	4	5	2 1/4	5/8-11	4.8	35111

Revolving Clamp Base

(for use with Short Bushing Type only)

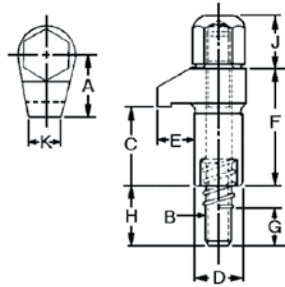


- Stop pin supplied with each base.

Part Number	A	B	C	D	E	F	Mtg. Bolt Size G	Wt (lbs)
35113	3/4	1	1 7/16	1 1/2	1	#10	5/16-18	0.5
35110	7/8	1	1 7/16	1 1/2	1	#10	3/8-16	0.6
35112	1 1/8	1 3/8	2 1/4	2 1/4	1 1/4	1/4	1/2-13	1.2
35111	1 1/4	1 1/2	2 1/4	2 1/4	1 1/4	3/8	5/8-11	1.7



Hook Clamp Assemblies



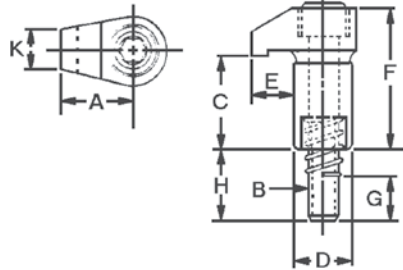
Moderate to heavy-duty holding power in close quarters. When released, the hook clamp swings quickly and easily out of the way for fast maneuvering of work. Spring-loaded shank for speedy clamp release.

- Material: Cast Steel Body, 4140
- Finish: Black Oxide
- Heat Treat: Rc 42-46
- Stud: Furnished

Part Number	A	Stud Size B	C	D	E	F	G	H	J	K	Wt. (lbs)	Max. Torque (Ft/lbs)
41901*	1 1/16	5/16-18 x 2 1/2	7/8	.624/.625	3/8	1 3/8	5/16	3/4	5/8	3/8	.21	25
41908	1	3/8-16 x 4	1 5/8	.874/.875	9/16	2 1/4	3/4	1 1/4	3/4	5/8	.59	40
41902*	1	1/2-13 x 4	1 5/8	.874/.875	9/16	2 1/4	5/8	1 1/8	15/16	5/8	.64	100
41903	1 7/16	5/8-11 x 5	1 13/16	1.124/1.125	7/8	2 3/4	7/8	1 3/8	1 3/16	3/4	1.38	180

*Conforms to TCMA

Hook Clamp Assemblies



Alternative to the above assembly, features flush-mounted socket screw instead of acorn nut. Designed for limited space applications and moderate holding power.

- Material: Cast Steel Body, 4140
- Finish: Black Oxide
- Heat Treat: Rc 42-46
- Screw: Furnished

Part Number	A	Cap Screw B	C	D	E	F	G	H	J	K	Wt. (lbs)	Max. Torque (Ft/lbs)
41904*	1 1/16	5/16-18 x 1 3/4	7/8	.624/.625	3/8	1 3/8	1/4	5/8	3/8	3/8	.14	25
41905*	1	3/8-16 x 3	1 5/8	.874/.875	9/16	2 1/4	5/8	1 1/16	5/8	5/8	.44	40
41907	1	1/2-13 x 3	1 5/8	.874/.875	9/16	2 1/4	5/8	1 1/8	5/8	5/8	.47	100
41906	1 7/16	5/8-11 x 3 1/2	1 13/16	1.124/1.125	7/8	2 3/4	13/16	1 9/16	3/4	3/4	1.00	180

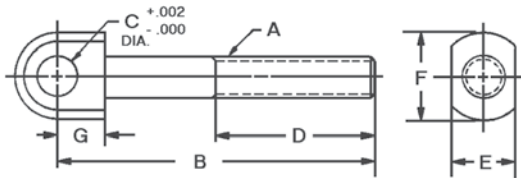
*Conforms to TCMA



Swing Bolts (Latch Bolt)



- Material: 4140
- Finish: Black Oxide
- Heat Treat: Rc 36-40
- Thread: Class 2A-UNC



Part Number	Thread Size A	B	C	D	E	F	G	Wt. (lbs) 10 Pcs.
29501*	3/8-16	2 1/2	3/8	1 3/8	1/2	3/4	3/8	.93
29502	3/8-16	3 1/4	3/8	1 3/4	1/2	3/4	3/8	1.25
29513	1/2-13	2 5/8	3/8	1 1/2	5/8	1	7/16	1.95
29504*	1/2-13	3 1/8	1/2	1 3/4	5/8	1	7/16	2.04
29505	1/2-13	4 1/8	1/2	2 1/4	5/8	1	7/16	2.64
29516	5/8-11	3 3/4	1/2	2	3/4	1 1/8	1/2	3.64
29507	5/8-11	3 1/2	5/8	1 3/4	3/4	1 1/8	1/2	3.67
29508	5/8-11	4 3/4	5/8	2 1/2	3/4	1 1/8	1/2	4.75
29509	3/4-10	4 3/8	3/4	2 1/2	7/8	1 3/8	11/16	6.10
29510	3/4-10	6 1/2	3/4	3 1/4	7/8	1 3/8	11/16	8.85

*Conforms to TCMA.

Not to be used for lifting.

Swing Bolts (Latch Bolt) Stainless Steel

- Material: 303 Stainless
- Thread: Class 2A-UNC

Part Number	Thread Size A	B	C	D	E	F	G	Wt. (lbs) 10 Pcs.
29601	3/8-16	2 1/2	3/8	1 3/8	1/2	3/4	1/2	1.1
29602	3/8-16	3 1/2	3/8	2	1/2	3/4	1/2	1.4
29603	1/2-13	3 1/8	1/2	1 5/8	5/8	1	5/8	2.6
29604	1/2-13	4-1/8	1/2	2 1/2	5/8	1	5/8	3.0
29605	5/8-11	3 1/2	5/8	1 5/8	3/4	1 1/4	3/4	4.6
29606	5/8-11	4 3/4	5/8	2 1/2	3/4	1 1/4	3/4	5.5

*B dimension indicates minimum length.

Not to be used for lifting.

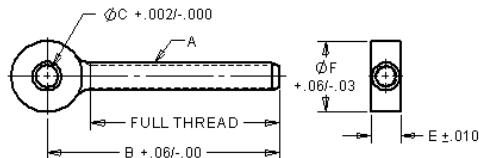


Rod Ends Threaded



- Material: Alloy Steel
- Finish: Black Oxide
- Heat Treat: 32-36 Rc
- Thread: Class 2A-UNC
- * 150,000 PSI Tensile

Rod Ends are forged and finished for applications not requiring flat contact with the head. All holes are reamed. Rod Ends can be used with spherical flange assemblies, flange nuts and clamp assemblies.



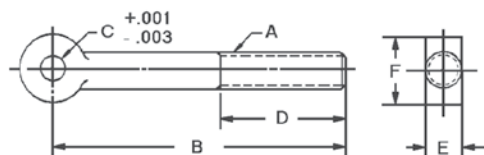
Part Thread Number	A	B	C	E	F	Wt. (lbs)
35301*	1/4-20	2	3/16	1/4	39/64	.04
35302	1/4-20	2	1/4	1/4	—	.03
35318*	5/16-18	3	1/4	5/16	43/64	.08
35319*	5/16-18	3	5/16	5/16	—	.08
35303*	3/8-16	3	5/16	3/8	13/16	.11
35320	3/8-16	4	5/16	3/8	—	.11
35304	3/8-16	2 3/16	3/8	3/8	—	.08
35305*	3/8-16	3	3/8	3/8	—	.11
35306*	3/8-16	5	3/8	3/8	—	.12
35307*	1/2-13	3 3/4	3/8	1/2	1 1/32	.25
35308	1/2-13	2 11/16	1/2	1/2	—	.19
35309	1/2-13	3 3/4	1/2	1/2	—	.24
35310	1/2-13	5	1/2	1/2	—	.31
35311	5/8-11	3 11/16	5/8	5/8	1 5/16	.40
35312*	5/8-11	4 1/2	5/8	5/8	—	.46
35314*	5/8-11	6	5/8	5/8	—	.60
35315*	3/4-10	4 1/2	3/4	3/4	1 9/16	.73
35321*	3/4-10	6	3/4	3/4	—	1.00
35317	1-8	8	1	1	2 3/32	2.25

*Not to be used for lifting.

Rod Ends Stainless Steel



- Material: 303 Stainless
- Thread Class 2A-UNC



Part Number	Ref. A	B	Ref. C	D	E	F
35721	1/4-20	2 1/8	3/16	7/8	1/4	1/2
35722	1/4-20	2 1/8	1/4	7/8	1/4	1/2
35723	5/16-18	3 1/2	1/4	1 1/2	5/16	5/8
35724	5/16-18	3 1/2	5/16	1 1/2	5/16	5/8
35725	3/8-16	3 1/2	3/8	1 1/2	3/8	3/4
35726	3/8-16	5	3/8	2 1/2	3/8	3/4
35727	1/2-13	3 3/4	1/2	1 1/2	1/2	1
35728	1/2-13	5	1/2	2	1/2	1
35729	5/8-11	4 1/2	5/8	2	5/8	1 1/4
35730	5/8-11	6	5/8	3	5/8	1 1/4
35731	3/4-10	4 1/2	3/4	2	3/4	1 1/2
35732	3/4-10	6	3/4	2 1/2	3/4	1 1/2

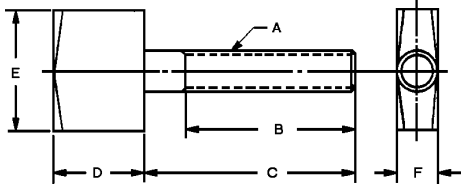
Not to be used for lifting.



Quarter Turn Screws



The diamond on all four corners of the Jergens Quarter Turn and Half Turn Screws, makes the opening and closing of jig lids easier. Ideally suited for clamping lids, covers and swing-away type bushing arms. Quarter Turn and Half Turn Screws may be machined for finishing requirements.



Part Number	A	B	C	D	E	F	Wt. (lbs) 10 Pcs.
34501*	10-32	7/8	1	1/2	1/2	3/16	.31
34502*	1/4-20	1	1 1/4	5/8	3/4	1/4	.47
34503	1/4-20	1 1/2	1 3/4	5/8	3/4	1/4	.48
34504*	5/16-18	1 1/4	1 1/2	3/4	1	5/16	.90
34505	5/16-18	1 3/4	2	3/4	1	5/16	1.10
34506*	3/8-16	1 1/4	1 1/2	1	1	3/8	1.25
34507	3/8-16	1 3/4	2	1	1	3/8	1.45
34508*	1/2-13	1 1/2	1 3/4	1	1 1/4	1/2	2.35
34509	1/2-13	2	2 1/4	1	1 1/4	1/2	2.65

*Conforms to TCMA

- Material: Stem, Low Carbon Steel
Head, Low Carbon Steel
- Finish: Black Oxide
- Thread: 2A-UNC (inch); Class 6g (Metric)
2A-UNF (10-32)

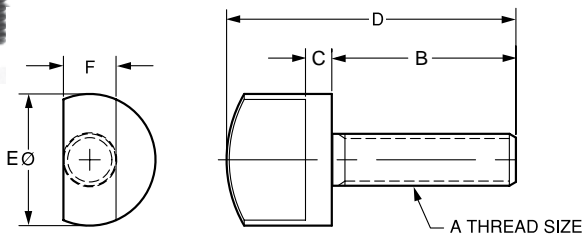
Part Number	A	B	C	D	E	F	Wt. (kg) 10 Pcs.
34571	M5 x 0.8	22	25	13	13	5	.14
34573	M6 x 1.0	25	32	16	19	6	.21
34575	M8 x 1.25	32	38	19	25	8	.41
34577	M10 x 1.5	32	38	25	25	10	.57
34579	M12 x 1.75	38	44	25	32	13	1.06

Half Turn Screws



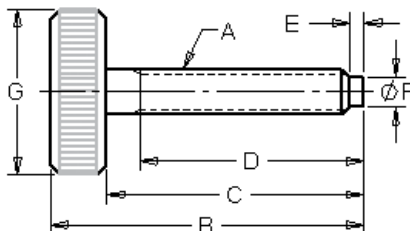
- Material: Low Carbon Steel
- Finish: Black Oxide
- Thread: 2A-UNF (10-32)
2A-UNC (other sizes)

Part Number	Thread A	B	C	D	E	F	Wt. (lbs) 10 Pcs.
34521	10-32	1	3/16	1-11/16	3/4	3/16	.3
34522	1/4-20	1-1/4	3/16	2	3/4	1/4	.3
34523	5/16-18	1-1/4	3/16	2-1/16	1	5/16	.3
34524	3/8-16	1-3/4	1/4	1-11/16	1-1/16	3/8	.3
34525	1/2-13	1-3/4	1/4	2-3/4	1-1/4	1/2	.3





Screws Thumb Screws



- Materials: 1215 Steel with black oxide finish, 303 Stainless
- Thread: 2A-UNC
2A-UNF (10-32)

The half-dog point protects the threads in case of peening.

Part No. Steel	Part No. Stainless	A	B	C	D	E	F	G	Wt. (lbs)
43901	—	10-24	1 9/16	1 1/4	1 1/16	3/64	1/8	3/4	.44
43902	—	10-24	1 5/16	1 5/8	1 7/16	3/64	1/8	3/4	.47
43903*	—	10-24	2 5/16	2	1 13/16	3/64	1/8	3/4	.48
—	44001	10-32	1 3/16	1	3/4	7/32	3/16	3/4	.45
—	44002	10-32	1 7/16	1 1/4	1	7/32	3/16	3/4	.45
43900	—	10-32	1-3/4	1 1/2	1 3/8	7/32	3/16	3/4	.45
—	44004	1/4-20	1 5/16	1	25/32	3/32	11/64	1	.75
43904*	44005*	1/4-20	1 13/16	1 1/2	1 1/4	1/16	5/32	1	.78
43905*	44006	1/4-20	2 5/16	2	1 3/4	1/16	5/32	1	.86
43906*	—	1/4-20	2 13/16	2 1/2	2 1/4	1/16	5/32	1	.91
43907	44008	5/16-18	2 1/8	1 3/4	1 7/16	5/64	13/64	1 1/8	1.30
43908	44009	5/16-18	2 5/8	2 1/4	1 15/16	5/64	13/64	1 1/8	1.36
43909	44010	5/16-18	3 1/8	2 3/4	2 7/16	5/64	13/64	1 1/8	1.50
43910*	44011	3/8-16	2 7/16	2	1 5/8	3/32	1/4	1 1/4	1.93
43911*	44012*	3/8-16	2 15/16	2 1/2	2 1/8	3/32	1/4	1 1/4	2.00
43912*	44013*	3/8-16	3 7/16	3	2 5/8	3/32	1/4	1 1/4	2.20
43913	—	1/2-13	2 15/16	2 1/2	2 1/8	1/8	11/32	1 1/4	2.55
—	44014	1/2-13	3	2 1/2	2	1/4	3/8	1 1/4	2.55
43914*	—	1/2-13	3 7/16	3	2 5/8	1/8	11/32	1 1/4	2.80
—	44015	1/2-13	3 1/2	3	2 1/2	1/4	3/8	1 1/4	3.00
43915*	—	1/2-13	3 15/16	3 1/2	3 1/8	1/8	11/32	1 1/4	3.10
—	44016	1/2-13	4	3 1/2	3	1/4	3/8	1 1/4	3.10

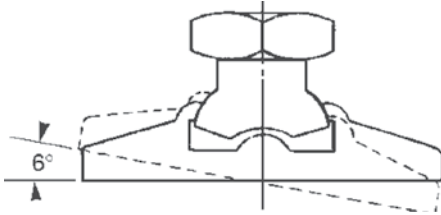
* Conforms to TCMA

Metric

Part Number	A	B	C	D	E	F	G	Wt. (Kg)
43971	M5x0.8	30	25	20	1.2	3	20	0.20
43972	M5x0.8	45	40	35	1.2	3	20	0.21
43973	M5x0.8	55	50	45	1.2	3	20	0.22
43974	M 6 x 1.0	50	40	35	1.5	4	25	0.35
43975	M 6 x 1.0	60	50	45	1.5	4	25	0.39
43976	M 6 x 1.0	75	65	55	1.5	4	25	0.41
43977	M8 x 1.25	50	40	35	2.4	5	30	0.59
43978	M8 x 1.25	60	50	45	2.4	5	30	0.62
43979	M8 x 1.25	75	65	60	2.4	5	30	0.68
43980	M10 x 1.5	60	50	45	2.4	6	30	0.88
43981	M10 x 1.5	75	65	60	2.4	6	30	0.91
43982	M10 x 1.5	85	75	70	2.4	6	30	1.00
43983	M 12 x 1.75	90	75	70	3	11	30	1.27
43984	M 12 x 1.75	105	90	85	3	11	30	1.41
43985	M 12 x 1.75	80	65	55	3	11	30	1.25

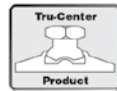


Tru-Center™ Toggle Products



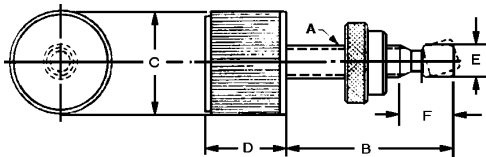
The Jergens patented "Tru-Center" products are the only pad type on the market to provide true center line clamping. The cut-away drawing illustrates how this works. The center line of the pad and the center line of the nut always intersect at the point of contact between the pad and the workpiece.

Adjustable Torque Toggle Screws



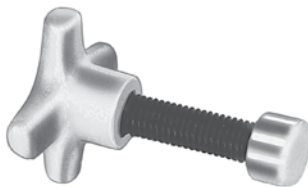
Perfect for delicate and fine clamping. Once the end holding force is reached, the head breaks free. Larger radius, straight knurled head for easy turning.

- Material: Stem, Stressproof® Pad, 4140
- Finish: Stem, Black Oxide Head, Chrome Plate
- Thread: 2A-UNC
- Pad: Angular movement either side of center (total 16°)

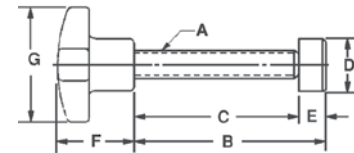


Part Number	A	B	C	D	E	F	End Force (lbs)	Wt. (lbs) 10 Pcs.
31101	10-24	1 1/4	1	23/32	.140	3/16	0-50	1.7
31102	1/4-20	1 1/2	1	23/32	.185	15/64	0-50	1.7
31103	1/4-20	2 1/2	1	23/32	.185	15/64	0-50	1.8
31104	5/16-18	1 3/4	1	23/32	.240	9/32	0-50	1.9
31105	5/16-18	2 3/4	1	23/32	.240	9/32	0-50	2.1
31106	3/8-16	2	1 1/4	25/32	.294	11/32	0-60	3.0
31107	1/2-13	3	1 1/4	25/32	.400	7/16	0-60	4.2

Hand Knob Toggle Screws



For clamping of irregular surfaces while the swivel shoe prevents marring of polished surfaces. Shoe is hardened for longer life. The cast iron hand knob is included for hand tightening. To remove pad for installation, pull and turn counter-clockwise.



- Material: Stem, Stressproof® Pad, 4140 Head, Cast Iron
- Finish: Stem, Black Oxide Pad, Zinc Plate Head, Cadmium Plate
- Thread: 2A-UNC
- Pad: Angular movement either side of center (total 16°)

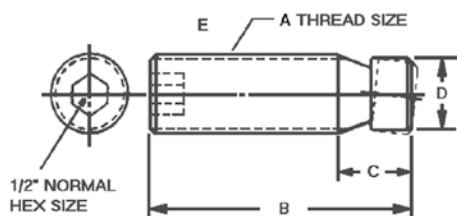
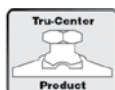
Part Number	A	B	C	D	E	F	G	Wt. (lbs) 10 Pcs.
36301	3/8-16	2	1 21/32	11/16	3/8	1 1/8	2	.21
36302	3/8-16	2 3/4	2 13/32	11/16	3/8	1 1/8	2	.24
36303	3/8-16	3 5/8	3 9/32	11/16	3/8	1 1/8	2	.25
36304	1/2-13	2 1/8	1 21/32	13/16	15/32	1 1/2	2 1/2	.44
36305	1/2-13	2 3/4	2 9/32	13/16	15/32	1 1/2	2 1/2	.48
36306	1/2-13	3 3/8	2 29/32	13/16	15/32	1 1/2	2 1/2	.52
36307	1/2-13	4	3 17/32	13/16	15/32	1 1/2	2 1/2	.55
36308	5/8-11	3	2 17/32	15/16	1/2	2	3	1.38
36309	5/8-11	3 3/4	3 9/32	15/16	1/2	2	3	1.50
36310	3/4-10	4 7/8	4 11/32	1 1/8	19/32	2	3	1.56



Tru-Center™ Toggle Products Socket Toggle Screws



- Material: 4140
- Finish: Black Oxide
- Heat Treat: 38-42 Rc
- Screws may be inserted without removing pads.



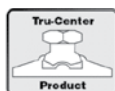
Part Number	Thread Size A	B	C	D	E Hex Size	Wt. (lbs) 10 Pcs.
33301*	1/4-20	1/2	15/64	.185	1/8	.03
33302*	1/4-20	1	15/64	.185	1/8	.09
33303*	5/16-18	3/4	9/32	.240	5/32	.09
33304*	5/16-18	1 1/2	9/32	.240	5/32	.24
33305*	3/8-16	1	11/32	.294	3/16	.20
33306*	3/8-16	2	11/32	.294	3/16	.45
33307*	1/2-13	1	7/16	.400	1/4	.30
33308*	1/2-13	2	7/16	.400	1/4	.78
33310*	5/8-11	2	17/32	.507	5/16	1.25

*Conforms to TCMA

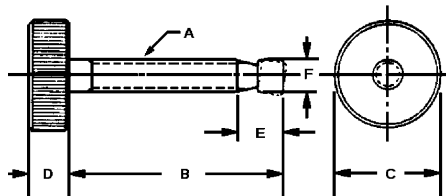
Toggle Thumb Screws



Same as our standard Thumb Screw only with the addition of our patented swivel pad on the end.



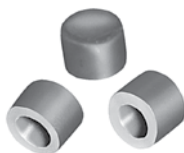
- Material: Stem and Head 1215, Pad, 4140
- Finish: Black Oxide
- Thread: 2A-UNC



Part Number	Thread Size A	B	C	D	E	F	Wt. (lbs) 10 Pcs.
33501	10-24	1	3/4	5/16	3/16	.140	.31
33502	10-24	1 1/2	3/4	5/16	3/16	.140	.47
33503*	1/4-20	1 1/2	1	5/16	15/64	.185	.78
33504*	1/4-20	2	1	5/16	15/64	.185	.94
33505*	5/16-18	1 1/2	1 1/8	3/8	9/32	.240	1.05
33506*	5/16-18	2	1 1/8	3/8	9/32	.240	1.25
33507*	5/16-18	2 1/2	1 1/8	3/8	9/32	.240	1.40
33508*	3/8-16	1 1/2	1 1/4	7/16	11/32	.294	1.70
33509*	3/8-16	2	1 1/4	7/16	11/32	.294	1.88
33510*	3/8-16	2 1/2	1 1/4	7/16	11/32	.294	2.04
33511*	3/8-16	3	1 1/4	7/16	11/32	.294	2.20

*Conforms to TCMA

Plastic Pad Covers



- Material: Nylon

Where soft material with fine finished surfaces must be clamped with relatively high pressures, we recommend the use of the Jergens Plastic Pad Covers. Resistant to oils and cutting compounds, they snap over the swivel end of our Hand KnobToggle Screws, Socket Toggle Screws, Toggle Thumb Screws, Toggle Pads and adjustable Torque Thumb Screws.

Part Number	To Fit Over O.D. of Pad	O.D. of Plastic Pad
32901	.140	.250
32902	.185	.250
32903	.240	.312
32904	.294	.375
32905	.400	.500

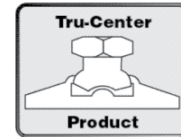
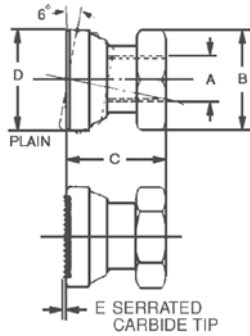
Part Number	To Fit Over O.D. of Pad	O.D. of Plastic Pad
32907	9/16	.625
32908	5/8	.750
32909	11/16	.812
32910	13/16	.937
32911	15/16	1.062

Plastic Pad Covers snap over outside diameter of Jergens swivel pads.



Tru-Center™ Toggle Products

Toggle Pads



Carbide Tipped Toggle Pads provide multiple point contact to compensate for surfaces that are rough or out-of-round. Points will embed themselves in the workpiece, which assures positive gripping. It eliminates possible radial load on the workpiece.

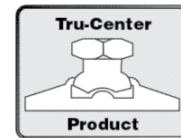
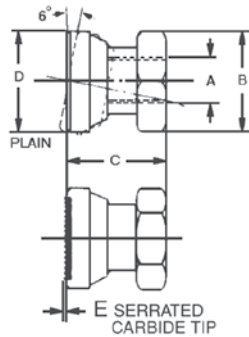
- Material: 4140 or Carbide Insert Tip
- Finish: Black Oxide
- Heat Treat: Plain Pad Rc 36-40
- Thread: 2B-UNC

Part Number		Thread Size A	Across Flats B	Plain C	Serrated C	D	E	Wt. (lbs) 10 Pcs.
Plain	Serrated							
43502	43702	1/4-20	1/2	1/2	9/16	9/16	.055	.20
43503	43703	5/16-18	9/16	11/16	3/4	5/8	.055	.28
43504	43704	3/8-16	5/8	53/64	3/4	11/16	.055	.41
43505	43705	1/2-13	3/4	7/8	15/16	13/16	.055	.62
43506	43706	5/8-11	7/8	1	1 1/32	15/16	.086	.94
43507*	43707	3/4-10	1 1/16	1 5/32	1 1/4	1 1/8	.086	1.60

*Plastic Pad is not available for this item.

Toggle Pads

Metric



- Material: 4140 or Carbide Insert Tip
- Finish: Black Oxide
- Heat Treat: Plain Pad Rc36-40
- Thread class: 6h

Part Number		Thread Size A	Across Flats B	Plain C	Serrated C	D	E	Wt. (kg) 10 Pcs.
Plain	Serrated							
43552	43752	M6 x 1.0	12	13	14.4	14	1.4	.09
43553	43753	M8 x 1.25	14	17	18.4	16	1.4	.13
43554	43754	M10 x 1.5	16	18	20.4	18	1.4	.19
43555	43755	M12 x 1.75	22	22	23.4	21	1.4	.28
43556	43756	M16 x 2.0	26	25	26.4	24	2.2	.43
43557	43757	M20 x 2.5	30	29	31.2	28	2.2	.73

Note: Metric Toggle Pads have two flats instead of a hex configuration on the head.

WORKHOLDING COMPONENTS

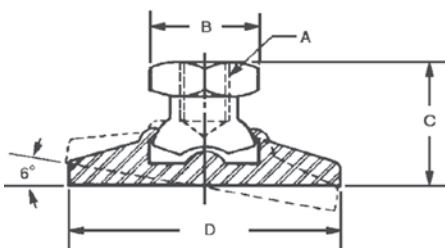


Leveling Pads

Provides a greater surface area where heavy loads are to be applied or where heavy pressures must be exerted on flex-

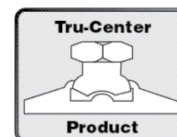
ible or softer materials. Pad face swivels and aligns with no damage to the uneven surfaces.

Tapped



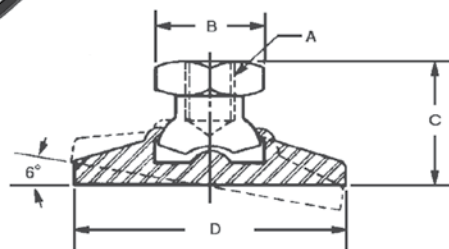
SWIVELS 6° EACH SIDE OF CENTER

- Material: 4140
- Finish: Zinc Plated
- Heat Treat: Rc 36-40
- Thread: UNC-2B



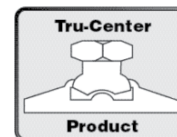
Part Number	Thread Size A	Across Flats B	C	D	Load Capacity (lbs)	Wt. (lbs)
32501	3/8-16	5/8	3/4	1 1/4	2300	.10
32502	1/2-13	3/4	1	1 7/8	4200	.22
32503	5/8-11	7/8	1 1/8	2 1/4	6600	.42
32504	3/4-10	1 1/16	1 7/16	3	10,000	.84

Metric Tapped



SWIVELS 6° EACH SIDE OF CENTER

- Material: 4140
- Finish: Zinc Plated
- Heat Treat: Rc36-40
- Thread class: 6h



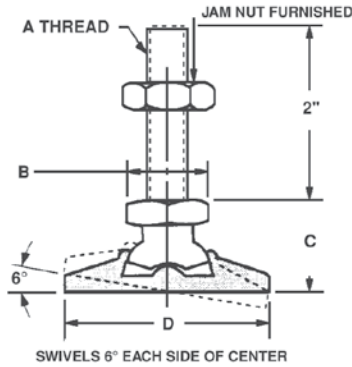
Part Number	Thread Size A	Across Flats B	C	D	Load Capacity (kg)	Wt. (kg)
32551	M10 x 1.5	16	21	32	1000	.05
32552	M12 x 1.75	22	27	48	1900	.10
32553	M16 x 2.0	26	31	57	2900	.19
32554	M20 x 2.5	30	39	76	4500	.38

Note: Metric Toggle Pads have two flats instead of a hex configuration on the head.

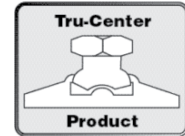


Leveling Pads

Threaded



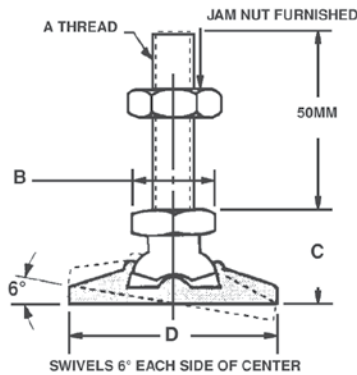
- Material: 4140
- Finish: Zinc Plated Pad
- Heat Treat: Rc 36-40
- Thread: UNC-2A



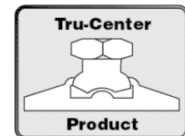
Part Number	Thread Size A	Across Flats B	C	D	Load Capacity (lbs)	Wt. (lbs)
32521	3/8-16	5/8	3/4	1 1/4	2300	.16
32522	1/2-13	3/4	1	1 7/8	4200	.37
32523	5/8-11	7/8	1 1/8	2 1/4	6600	.58
32524	3/4-10	1 1/16	1 7/16	3	10,000	1.22

Jam nut is furnished.

Metric Threaded



- Material: 4140
- Finish: Zinc Plated
- Heat Treat: Rc36-40
- Thread class: 6g



Part Number	Thread Size A	Across Flats B	C	D	Load Capacity (kg)	Wt. (kg)
32571	M10 x 1.5	16	21	32	1000	.07
32572	M12 x 1.75	22	27	48	1900	.17
32573	M16 x 2.0	26	31	57	2900	.26
32574	M20 x 2.5	30	39	76	4500	.55

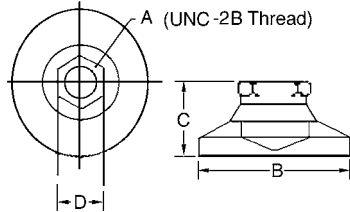
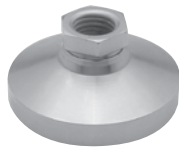
Note: Metric Toggle Pads have two flats instead of a hex configuration on the head.



Leveling Mounts

- Material: 1214 Steel
- Zinc-plated, yellow finish
- Non-Skid Material: Neoprene
- Case hardened, file hard
- Swivels 20°, ±10° from center in all directions
- Available with non-skid on base
- Available in stainless steel, or with a delrin pad, and in larger sizes upon request.

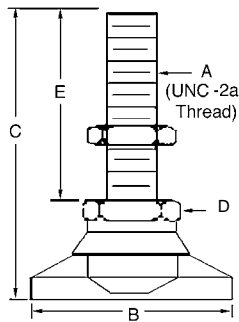
Tapped



Part Number		A	B	C*	Across Flats D	Maximum Load (lbs)	
Standard	Non-skid					Standard	Non-skid
32601	32651	10-32	3/4	17/32	3/8	700	550
32602	32652	1/4-20	1	45/64	1/2	1000	825
32606	32656	3/8-16	1 1/4	7/8	5/8	3750	2820
32608	32658	1/2-13	1 7/8	1 1/8	3/4	5000	3750
32610	32660	5/8-11	2 1/2	1 1/4	7/8	6000	5000
32612	32662	3/4-10	3	1 1/2	1 1/16	7400	6000
32616	32666	1-8	4	1 7/8	1 3/8	21000	16500

*Add 1/8" to C Dimension for non-skid style.

Threaded

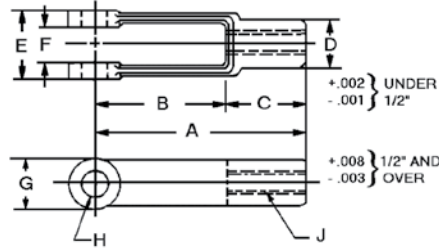


Part Number		A	B	C*	Across Flats D	E	Maximum Load (lbs)	
Standard	Non-skid						Standard	Non-skid
32621	32671	10-32	3/4	1 17/32	3/8	1	700	550
32623	32673	1/4-20	1	1 61/64	1/2	1 1/4	1000	825
32626	32676	3/8-16	1 1/4	2 7/8	5/8	2	3750	2850
32629	32679	1/2-13	1 7/8	3 1/8	3/4	2	5000	3750
32632	32682	5/8-11	2 1/2	3 1/4	7/8	2	6000	4350
32635	32685	3/4-10	3	3 1/2	1 1/16	2	7400	5500
32640	32690	1-8	4	5 3/8	1 3/8	3 1/2	20000	16500

*Add 1/8" to C Dimension for non-skid style.



Yokes Tapped



- Material: C-1021 Forging
- Finish: Black Oxide
- Thread: 2B

Jergens offers these yokes for attaching to threaded linkage at stem end. The forged holes are reamed and faced-off parallel inside and outside the yoke ends.

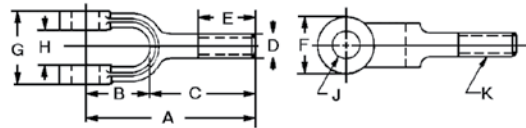
Part Number Coarse Pitch	UNC J	Part Number Fine Pitch	UNF J	A	B	C	D	E	F	G	H	Wt. (lbs) 10 Pcs.
		45501	10-32	1 9/16	1	9/16	5/16	7/16	3/16	3/8	3/16	.21
45302	1/4-20	45502	1/4-28	2	1 1/4	3/4	7/16	5/8	9/32	1/2	1/4	.62
45303	5/16-18	45503	5/16-24	2 1/4	1 7/16	13/16	1/2	3/4	11/32	19/32	5/16	.94
45304	3/8-16	45504	3/8-24	2 1/2	1 5/8	7/8	5/8	7/8	7/16	11/16	3/8	1.45
45305	7/16-14	45505	7/16-20	2 7/8	1 7/8	1	23/32	1	1/2	13/16	7/16	2.35
45306	1/2-13	45506	1/2-20	3	1 7/8	1 1/8	13/16	1 1/8	9/16	15/16	1/2	3.10
45307	1/2-13	45507	1/2-20	4 3/16	3 1/16	1 1/8	13/16	1 1/8	9/16	15/16	1/2	4.35
45308	5/8-11	45508	5/8-18	4 15/16	3 11/16	1 1/4	1 1/16	1 3/8	11/16	1 3/16	5/8	8.10
45309	3/4-10	45509	3/4-16	4	2 3/4	1 1/4	1 1/8	1 1/2	11/16	1 3/8	5/8	7.50
45310	3/4-10	—	—	6 1/16	4 9/16	1 1/2	1 1/4	1 5/8	13/16	1 7/16	3/4	15.00
45312	1-8	—	—	8	6	2	1 5/8	2 1/8	1 1/16	1 15/16	1	32.50

WORKHOLDING COMPONENTS



Yokes

Threaded

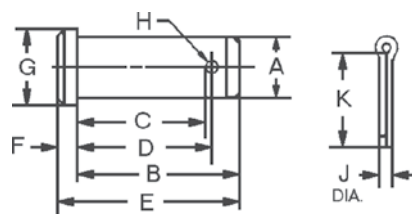


- Material: C-1021 Forging
- Finish: Black Oxide
- Thread: 2A-UNC

This style yoke is similar to the above except the stem is threaded for attaching to tapped linkage.

Part Number	K	A	B	C	D	E	F	G	H	J	Wt. (lbs) 10 Pcs.
45902	1/4-20	1 3/4	5/8	1 1/8	1/4	3/4	1/2	5/8	9/32	1/4	.47
45903	5/16-18	2	3/4	1 1/4	5/16	3/4	19/32	3/4	11/32	5/16	.85
45904	3/8-16	2 1/8	27/32	1 9/32	3/8	3/4	11/16	7/8	7/16	3/8	1.10
45906	1/2-13	2 1/2	1 1/8	1 3/8	1/2	3/4	15/16	1 1/8	9/16	1/2	2.35
45907	5/8-11	2 7/8	1 7/16	1 7/16	5/8	3/4	1 3/16	1 3/8	11/16	5/8	4.20
45908	3/4-10	3 5/8	1 11/16	1 15/16	3/4	1 1/4	1 7/16	1 5/8	13/16	3/4	7.35
45910	1-8	4 1/2	2 1/2	2	1	1 1/8	1 15/16	2 1/8	1 1/16	1	17.50

Clevis Pins



- Material: Low Carbon Steel
- All Clevis Pins supplied with cotter pins.

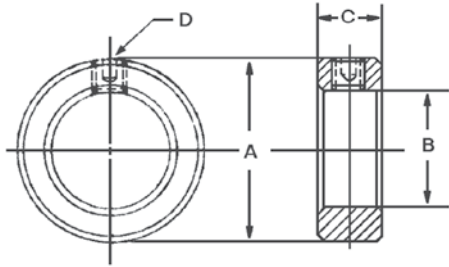
Part Number	A	B	C	D	E	F	G	H	J	K	Wt. (lbs) 10 Pcs.
32701	3/16	37/64	29/64	31/64	41/64	1/16	5/16	5/64	1/16	1/2	.08
32702	1/4	49/64	41/64	43/64	55/64	3/32	3/8	5/64	1/16	1/2	.15
32703	5/16	15/16	49/64	13/16	1 1/32	3/32	7/16	7/64	3/32	1/2	.30
32704	3/8	1 1/16	57/64	15/16	1 3/16	1/8	1/2	7/64	3/32	5/8	.45
32705	7/16	1 3/16	1 1/64	1 1/16	1 11/32	5/32	9/16	7/64	3/32	5/8	.60
32706	1/2	1 23/64	1 9/64	1 13/64	1 33/64	5/32	5/8	9/64	1/8	1	1.00
32707	5/8	1 39/64	1 25/64	1 29/64	1 13/16	13/64	13/16	9/64	1/8	1	1.18
32708	5/8	1 3/4	1 33/64	1 19/32	1 63/64	13/64	13/16	9/64	1/8	1	1.82
32709	3/4	1 29/32	1 41/64	1 23/32	2 5/32	1/4	15/16	11/64	5/32	1 1/2	3.00
32711	1	2 13/32	2 9/64	2 7/32	2 3/4	11/32	1 3/16	11/64	5/32	1 1/2	7.00



Steel Shaft Collars

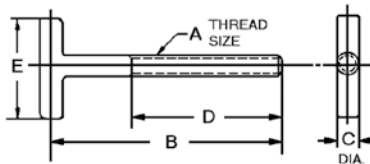


- Material: Low Carbon Steel
- Finish: Zinc Plate
- Set Screws Furnished
- Tolerances on I.D. +.005
-.000



Part Number	A	B	C	D	Wt. (lbs) 10 Pcs.
40101	5/8	1/4	3/8	10-32	0.21
40102	5/8	5/16	3/8	10-32	0.21
40103	3/4	3/8	7/16	1/4-28	0.4
40104	7/8	1/2	1/2	1/4-28	0.6
40105	1 1/8	5/8	1/2	1/4-28	0.94
40106	1 1/4	3/4	1/2	5/16-18	1
40107	1 3/8	7/8	9/16	5/16-18	1.13
40108	1 1/2	1	9/16	5/16-18	1.5
40109	1 3/4	1 1/8	9/16	5/16-18	2
40110	2	1 1/4	11/16	3/8-16	3.5
40111	2 1/4	1 3/8	3/4	3/8-16	4
40112	2 1/4	1 1/2	3/4	3/8-16	4.3
40113	2 7/8	1 3/4	7/8	1/2-13	10.9
40114	3	2	7/8	1/2-13	9.5

Tee Strap Bolts

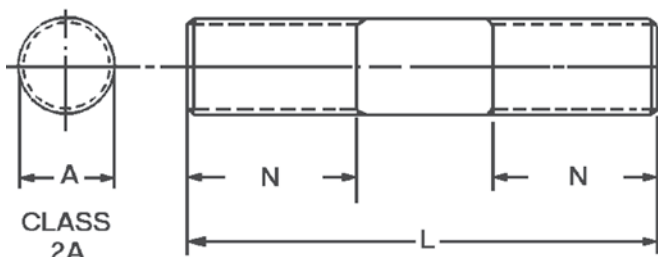


- Material: C-1021 Forging
- Finish: Black Oxide
- Thread: 2A-UNC

Part Number	Thread Size A	B	C	D	E	Wt. (lbs)
43101	1/4-20	2 1/2	1/4	1 1/2	1 1/4	.09
43102	3/8-16	5	3/8	4	1 3/4	.19
43103	1/2-13	6	1/2	5	3	.44



Alloy Steel Studs



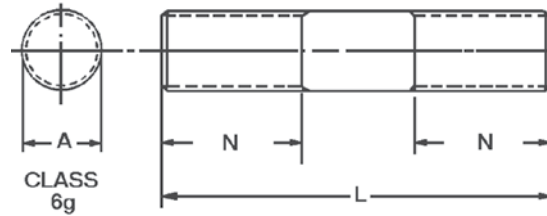
- Material: Stressproof® (125,000 psi Min.) Tensile (100,000 psi Min.) Yield
- Finish: Black Oxide
- Available in metric sizes. See the next page.

Longer or special studs are available upon request. Please send your print or sketch to our Customer Service Department.

Thread A	L	Part Number	N	Wt. (lbs) 10 Pcs	Thread A	L	Part Number	N	Wt. (lbs) 10 Pcs.
1/4-20	1 1/2	37720	7/16	.21	5/8-11	2 1/2	38520	13/16	2.12
1/4-20	2	37721	11/16	.28	5/8-11	3	38521	1 1/16	2.55
1/4-20	2 1/2	37722	15/16	.35	5/8-11	3 1/2	38522	1 5/16	2.97
1/4-20	3	37723	1	.42	5/8-11	4	38523	1 9/16	3.40
1/4-20	3 1/2	37724	1	.49	5/8-11	4 1/2	38524	1 3/4	3.82
1/4-20	4	37725	1	.56	5/8-11	5	38525	1 3/4	3.25
5/16-18	1 1/2	37920	7/16	.33	5/8-11	5 1/2	38526	1 3/4	4.68
5/16-18	2	37921	11/16	.44	5/8-11	6	38527	1 3/4	5.10
5/16-18	2 1/2	37922	15/16	.55	5/8-11	7	38529	1 3/4	5.90
5/16-18	3	37923	1 1/8	.66	5/8-11	8	38531	1 3/4	6.80
5/16-18	3 1/2	37924	1 1/8	.77	5/8-11	9	38532	1 3/4	7.60
5/16-18	4	37925	1 1/8	.88	5/8-11	10	38533	1 3/4	8.50
3/8-16	1 1/2	38120	3/8	.54	5/8-11	12	38534	1 3/4	10.20
3/8-16	2	38121	5/8	.62	3/4-10	3	38721	15/16	3.75
3/8-16	2 1/2	38122	7/8	.77	3/4-10	3 1/2	38722	1 3/16	4.35
3/8-16	3	38123	1 1/8	.93	3/4-10	4	38723	1 7/16	5.00
3/8-16	3 1/2	38124	1 1/4	1.10	3/4-10	4 1/2	38724	1 11/16	5.60
3/8-16	4	38125	1 1/4	1.24	3/4-10	5	38725	1 15/16	6.20
3/8-16	4 1/2	38126	1 1/4	1.39	3/4-10	5 1/2	38726	2	6.90
3/8-16	5	38127	1 1/4	1.55	3/4-10	6	38727	2	7.50
3/8-16	5 1/2	38128	1 1/4	1.71	3/4-10	7	38729	2	8.75
3/8-16	6	38129	1 1/4	1.86	3/4-10	8	38731	2	10.00
3/8-16	7	38131	1 1/4	2.27	3/4-10	10	38733	2	12.50
3/8-16	8	38133	1 1/4	2.48	3/4-10	12	38734	2	15.00
1/2-13	2	38321	5/8	1.10	7/8-9	4	38922	1 13/32	6.80
1/2-13	2 1/2	38322	7/8	1.37	7/8-9	5	38923	1 29/32	8.50
1/2-13	3	38323	1 1/8	1.65	7/8-9	6	38924	2 1/4	10.20
1/2-13	3 1/2	38324	1 3/8	1.92	7/8-9	8	38925	2 1/4	13.60
1/2-13	4	38325	1 1/2	2.20	7/8-9	10	38926	2 1/4	17.00
1/2-13	4 1/2	38326	1 1/2	2.47	7/8-9	12	38927	2 1/4	20.40
1/2-13	5	38327	1 1/2	2.75	1-8	4	39122	1 3/8	8.80
1/2-13	5 1/2	38328	1 1/2	3.02	1-8	5	39123	1 7/8	11.00
1/2-13	6	38329	1 1/2	3.30	1-8	6	39124	2 3/8	13.20
1/2-13	7	38331	1 1/2	3.85	1-8	8	39125	2 1/2	17.60
1/2-13	8	38333	1 1/2	4.40	1-8	10	39126	2 1/2	22.00
1/2-13	9	38334	1 1/2	4.95	1-8	12	39127	2 1/2	26.40
1/2-13	10	38335	1 1/2	5.50					
1/2-13	12	38336	1 1/2	6.60					



Studs Metric



- Material: Stressproof®
862 Tensile (MPa)
689 Yield (MPa)
- Finish: Black Oxide
- Longer or special studs are available on request

Thread A	L	Part Number	N	Wt. kg
M6 x 1.0	50	37771	18	.04
M6 x 1.0	66	37772	25	.06
M6 x 1.0	81	37773	28	.06
M6 x 1.0	96	37774	28	.09
M8 x 1.25	50	37971	18	.09
M8 x 1.25	66	37972	25	.11
M8 x 1.25	81	37973	32	.13
M8 x 1.25	96	37974	32	.15
M8 x 1.25	111	37975	32	.18
M10 x 1.5	50	38171	16	.13
M10 x 1.5	66	38172	23	.18
M10 x 1.5	80	38173	30	.20
M10 x 1.5	95	38174	35	.24
M10 x 1.5	110	38175	35	.29
M10 x 1.5	125	38176	39	.31
M10 x 1.5	140	38177	39	.35
M10 x 1.5	155	38178	39	.40
M12 x 1.75	50	38371	16	.18
M12 x 1.75	66	38372	23	.24
M12 x 1.75	81	38373	31	.29
M12 x 1.75	95	38374	40	.33
M12 x 1.75	111	38375	40	.40
M12 x 1.75	125	38376	40	.46
M12 x 1.75	141	38377	40	.53
M12 x 1.75	156	38378	40	.55
M16 x 2.0	80	38571	29	.51
M16 x 2.0	95	38572	36	.59
M16 x 2.0	110	38573	44	.70
M16 x 2.0	125	38574	47	.81
M16 x 2.0	150	38575	47	1.00
M16 x 2.0	175	38576	47	1.17
M16 x 2.0	200	38577	47	1.36
M20 x 2.5	81	38771	30	.84
M20 x 2.5	96	38772	37	1.0
M20 x 2.5	111	38773	45	1.14
M20 x 2.5	126	38774	52	1.25
M20 x 2.5	151	38775	48	1.54
M20 x 2.5	176	38776	56	1.85
M20 x 2.5	201	38777	56	2.16

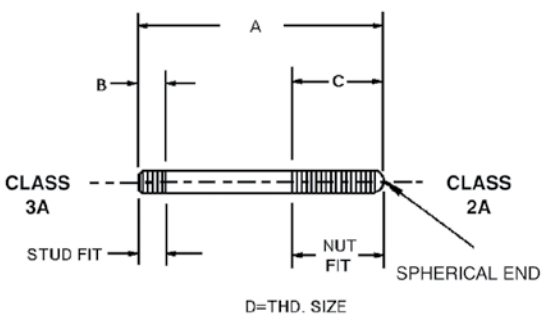
All Dimensions in Millimeters.



Fixture Studs Stainless Steel



• Material: 303 Stainless

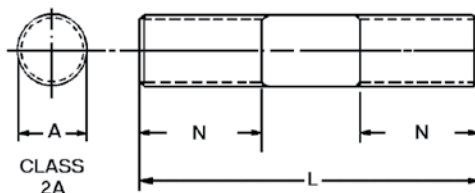


Part Number	A	Stud Fit B	Nut Fit C	Thread
37601	1	7/32	1/2	10-32
37602	1 1/2	7/32	3/4	10-32
37603	2	7/32	3/4	10-32
37802	1 1/2	9/32	5/8	1/4-20
37804	2	9/32	3/4	1/4-20
37806	2 1/2	9/32	3/4	1/4-20
37808	3	9/32	1	1/4-20
38002	1 1/2	11/32	5/8	5/16-18
38004	2	11/32	1	5/16-18
38006	2 1/2	11/32	1 1/4	5/16-18
38008	3	11/32	1 3/8	5/16-18
38009	3 1/2	11/32	1 1/2	5/16-18
38010	4	11/32	1 1/2	5/16-18
38201	1 5/8	11/32	3/4	3/8-16
38202	2	11/32	1	3/8-16
38204	2 1/2	11/32	1 1/4	3/8-16
38206	3	11/32	1 3/8	3/8-16
38207	3 1/2	11/32	1 1/2	3/8-16
38208	4	11/32	1 1/2	3/8-16

Set-Up Studs Stainless Steel



• Material: 303 Stainless



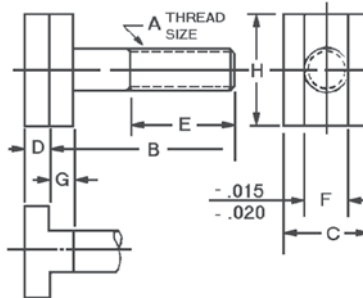
Part Number	Thread A	L	N
38421	1/2-13	2	3/4
38422	1/2-13	2 1/2	1 1/8
38423	1/2-13	3	1 3/8
38424	1/2-13	3 1/2	1 1/2
38425	1/2-13	4	1 1/2
38426	1/2-13	4 1/2	1 1/2
38427	1/2-13	5	1 1/2
38428	1/2-13	5 1/2	1 1/2
38429	1/2-13	6	1 1/2
38431	1/2-13	7	1 1/2
38433	1/2-13	8	1 1/2
38434	1/2-13	9	1 1/2
38435	1/2-13	10	1 1/2
38436	1/2-13	12	1 1/2

Part Number	Thread A	L	N
38620	5/8-11	2 1/2	1 1/8
38621	5/8-11	3	1 3/8
38622	5/8-11	3 1/2	1 3/4
38623	5/8-11	4	1 3/4
38624	5/8-11	4 1/2	1 3/4
38625	5/8-11	5	1 3/4
38626	5/8-11	5 1/2	1 3/4
38627	5/8-11	6	1 3/4
38629	5/8-11	7	1 3/4
38631	5/8-11	8	1 3/4
38632	5/8-11	9	1 3/4
38633	5/8-11	10	1 3/4
38634	5/8-11	12	1 3/4

Part Number	Thread A	L	N
38821	3/4-10	3	1 3/8
38822	3/4-10	3 1/2	1 1/2
38823	3/4-10	4	1 3/4
38824	3/4-10	4 1/2	2
38825	3/4-10	5	2
38826	3/4-10	5 1/2	2
38827	3/4-10	6	2
38829	3/4-10	7	2
38831	3/4-10	8	2
38833	3/4-10	10	2
38834	3/4-10	12	2



T-Slot Bolts



Jergens Feature:

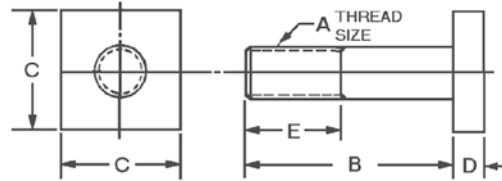
Protect your expensive machine table slots with Jergens T-Slot Bolts. The completely finished machined head provides at least 50% more bearing surface under your table slot. T-Slot Bolts outlast T-Bolts in wearability in most applications.

- Material: Alloy Steel
- Finish: Black Oxide
- Heat Treat: Rc 34-38
- Thread: 2A-UNC

Part Number	Thread Size A	B	C	D	E	F	G	H	Wt. (lbs)
44101	1/2-13	2	7/8	5/16	1	1/2	9/32	1 1/4	.22
44102	1/2-13	2 1/2	7/8	5/16	1 1/4	1/2	9/32	1 1/4	.25
44103	1/2-13	3	7/8	5/16	1 1/2	1/2	9/32	1 1/4	.27
44104	1/2-13	3 1/2	7/8	5/16	1 1/2	1/2	9/32	1 1/4	.30
44105	1/2-13	4	7/8	5/16	1 1/2	1/2	9/32	1 1/4	.33
44106	1/2-13	5	7/8	5/16	2	1/2	9/32	1 1/4	.37
44107	1/2-13	6	7/8	5/16	2	1/2	9/32	1 1/4	.44
44108	1/2-13	8	7/8	5/16	2	1/2	9/32	1 1/4	.53
44301	5/8-11	2	1 1/8	3/8	1 1/4	5/8	3/8	1 1/2	.39
44302	5/8-11	2 1/2	1 1/8	3/8	1 1/4	5/8	3/8	1 1/2	.41
44303	5/8-11	3	1 1/8	3/8	1 1/2	5/8	3/8	1 1/2	.44
44304	5/8-11	3 1/2	1 1/8	3/8	1 1/2	5/8	3/8	1 1/2	.50
44305	5/8-11	4	1 1/8	3/8	1 1/2	5/8	3/8	1 1/2	.55
44306	5/8-11	5	1 1/8	3/8	1 1/2	5/8	3/8	1 1/2	.62
44307	5/8-11	6	1 1/8	3/8	1 1/2	5/8	3/8	1 1/2	.72
44308	5/8-11	8	1 1/8	3/8	3	5/8	3/8	1 1/2	.85
44309	5/8-11	10	1 1/8	3/8	3	5/8	3/8	1 1/2	1.00
44310	5/8-11	12	1 1/8	3/8	3	5/8	3/8	1 1/2	1.25
44502	3/4-10	2 1/2	1 5/16	7/16	1 1/4	3/4	7/16	1 3/4	.64
44503	3/4-10	3	1 5/16	7/16	1 1/2	3/4	7/16	1 3/4	.70
44504	3/4-10	3 1/2	1 5/16	7/16	1 1/2	3/4	7/16	1 3/4	.77
44505	3/4-10	4	1 5/16	7/16	1 1/2	3/4	7/16	1 3/4	.85
44506	3/4-10	5	1 5/16	7/16	1 1/2	3/4	7/16	1 3/4	.95
44507	3/4-10	6	1 5/16	7/16	1 1/2	3/4	7/16	1 3/4	1.05
44508	3/4-10	8	1 5/16	7/16	3	3/4	7/16	1 3/4	1.25
44509	3/4-10	10	1 5/16	7/16	3	3/4	7/16	1 3/4	1.45
44510	3/4-10	12	1 5/16	7/16	3	3/4	7/16	1 3/4	1.75
44701	1-8	3 1/2	1 11/16	1/2	2	1	1/2	2 1/4	1.25
44702	1-8	4	1 11/16	1/2	2	1	1/2	2 1/4	1.50
44703	1-8	4 1/2	1 11/16	1/2	2 1/2	1	1/2	2 1/4	1.62
44704	1-8	5	1 11/16	1/2	2 1/2	1	1/2	2 1/4	1.75
44705	1-8	6	1 11/16	1/2	2 1/2	1	1/2	2 1/4	2.00
44706	1-8	8	1 11/16	1/2	3	1	1/2	2 1/4	2.40
44707	1-8	10	1 11/16	1/2	3	1	1/2	2 1/4	2.75
44708	1-8	12	1 11/16	1/2	3	1	1/2	2 1/4	3.10



T-Bolts



- Material: Alloy Steel
- Finish: Black Oxide
- Heat Treat: Rc 34-38
- Thread: 2A-UNC

Part Number	Thread Size A	B	C	D	E	Wt. (lbs)
42101	3/8-16	1 1/2	11/16	1/4	3/4	.07
42102	3/8-16	2	11/16	1/4	1 1/4	.08
42103	3/8-16	2 1/2	11/16	1/4	1 1/4	.09
42104	3/8-16	3	11/16	1/4	1 1/2	.11
42105	3/8-16	3 1/2	11/16	1/4	1 1/2	.12
42106	3/8-16	4	11/16	1/4	1 1/2	.14
42301	1/2-13	1 1/2	7/8	1/4	3/4	.12
42302	1/2-13	2	7/8	1/4	1 1/4	.14
42303	1/2-13	2 1/2	7/8	1/4	1 1/4	.17
42304	1/2-13	3	7/8	1/4	1 1/2	.20
42305	1/2-13	3 1/2	7/8	1/4	1 1/2	.22
42306	1/2-13	4	7/8	1/4	2	.25
42307	1/2-13	4 1/2	7/8	1/4	2	.27
42308	1/2-13	5	7/8	1/4	2	.30
42309	1/2-13	5 1/2	7/8	1/4	2	.33
42310	1/2-13	6	7/8	1/4	2	.36
42502	5/8-11	2	1 1/8	3/8	1 1/4	.28
42503	5/8-11	2 1/2	1 1/8	3/8	1 1/4	.33
42504	5/8-11	3	1 1/8	3/8	1 1/2	.37
42505	5/8-11	3 1/2	1 1/8	3/8	1 1/2	.41
42506	5/8-11	4	1 1/8	3/8	1 1/2	.44
42507	5/8-11	5	1 1/8	3/8	1 1/2	.53
42508	5/8-11	6	1 1/8	3/8	1 1/2	.61
42509	5/8-11	8	1 1/8	3/8	3	.78
42510	5/8-11	10	1 1/8	3/8	3	.97
42511	5/8-11	12	1 1/8	3/8	3	1.13

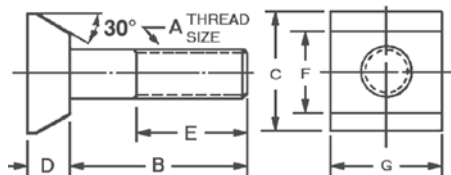
Part Number	Thread Size A	B	C	D	E	Wt. (lbs)
42701	3/4-10	2 1/2	1 1/4	1/2	1 1/4	.48
42702	3/4-10	3	1 1/4	1/2	1 1/2	.55
42703	3/4-10	3 1/2	1 1/4	1/2	1 1/2	.61
42704	3/4-10	4	1 1/4	1/2	1 1/2	.66
42705	3/4-10	5	1 1/4	1/2	1 1/2	.78
42706	3/4-10	6	1 1/4	1/2	1 1/2	.90
42707	3/4-10	8	1 1/4	1/2	3	1.17
42708	3/4-10	10	1 1/4	1/2	3	1.38
42709	3/4-10	12	1 1/4	1/2	3	1.62
42901	1-8	4	1 11/16	11/16	2 1/2	1.25
42902	1-8	5	1 11/16	11/16	2 1/2	1.50
42903	1-8	6	1 11/16	11/16	2 1/2	1.75
42911	1-8	7	1 11/16	11/16	2 1/2	1.88
42904	1-8	8	1 11/16	11/16	3	2.00
42912	1-8	9	1 11/16	11/16	3	2.25
42905	1-8	10	1 11/16	11/16	3	2.50
42906	1-8	12	1 11/16	11/16	3	3.00
42907	1-8	14	1 11/16	11/16	3	3.50
43003	1 1/4-7	8	1 7/8	7/8	5	3.65
43004	1 1/4-7	9	1 7/8	7/8	5	4.00
43005	1 1/4-7	10	1 7/8	7/8	5	4.35
43006	1 1/4-7	12	1 7/8	7/8	5	5.05
43007	1 1/4-7	14	1 7/8	7/8	5	5.75
43008	1 1/4-7	16	1 7/8	7/8	5	6.45
43009	1 1/4-7	18	1 7/8	7/8	5	7.15
43011	1 1/4-7	22	1 7/8	7/8	5	8.20
43012	1 1/4-7	24	1 7/8	7/8	5	9.25

Dovetail Bolts



Dovetail Bolts can be used for clamping guide members on the front of press brakes.

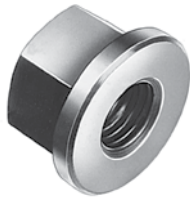
- Material: Alloy Steel
- Finish: Black Oxide
- Heat Treat: Rc 34-38
- Thread: 2A-UNC



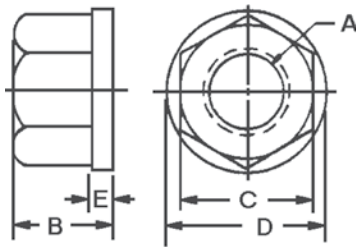
Part Number	Thread Size A	B	C	D	E	F	G	Wt. (lbs) 10 Pcs.
17901	5/8-11	1 1/4	1 1/16	3/8	3/4	3/4	1 1/8	2.00
17902	5/8-11	2	1 1/16	3/8	1 1/8	3/4	1 1/8	2.30
17903	5/8-11	2 3/4	1 1/16	3/8	1 1/2	3/4	1 1/8	3.10
17904	5/8-11	3 3/4	1 1/16	3/8	1 1/2	3/4	1 1/8	5.15



Flange Nuts



- Material: Low Carbon Steel
- Finish: Black Oxide
- Heat Treat: Case Hardened
- Thread: 2B-UNC



- Material: 303 Stainless Steel

Where heavy clamping pressures and vibrations could cause trouble, the wide face surface of the flange nut holds through with greater friction.

Carbon Steel

Part Number	A	B	Course Pitch			Wt. (lbs) 10 pcs.
			C	D	E	
19904*	3/8-16	1/2	11/16	7/8	1/8	0.51
19906*	1/2-13	11/16	7/8	1 1/8	5/32	1.10
19907*	5/8-11	13/16	1 1/16	1 3/8	3/16	1.75
19908*	3/4-10	1	1 1/4	1 5/8	1/4	3.20
19909*	7/8-9	1 1/8	1 7/16	1 3/4	1/4	4.20
19910*	1-8	1 1/4	1 5/8	2	1/4	6.00
19911	1 1/8-7	1 3/8	1 13/16	2 1/4	1/4	8.00
19912	1 1/4-7	1 3/8	1 13/16	2 1/4	1/4	7.60
19913	1 1/2-6	1 1/2	2 3/16	2 3/4	1/4	11.90

*Conforms to TCMA

Stainless Steel

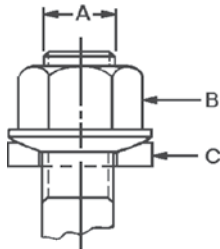
Part Number	A	B	C	D	E	Wt. (lbs) 10 Pcs.
20002	1/4-20	5/16	1/2	5/8	3/32	.15
20003	5/16-18	3/8	9/16	3/4	3/32	.19
20004	3/8-16	1/2	11/16	7/8	1/8	.51
20006	1/2-13	11/16	7/8	1 1/8	5/32	1.10
20007	5/8-11	13/16	1 1/16	1 3/8	3/16	1.75
20008	3/4-10	1	1 1/4	1 5/8	1/4	3.20



Spherical Flange Assemblies



Same advantages as Spherical Washers but with the addition of a nut to replace the top section of the washers. Convex bottom of nut nests into the concave bottom section for full floating action.

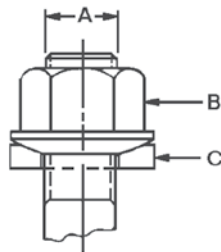
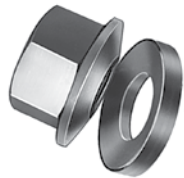


- Material: Low Carbon Steel
- Finish: Black Oxide
- Heat Treat: Case Hardened

Part Number	A	Nut P/N B	Washer P/N C	Wt. (lbs) 10 Pcs.
39301	10-24	39701	41301	.12
39302	1/4-20	39702	41302	.16
39303	5/16-18	39703	41303	.31
39304	3/8-16	39704	41304	.65
39305	1/2-13	39705	41305	1.45
39306	5/8-11	39706	41306	2.44
39307	3/4-10	39707	41307	4.10
39308	7/8-9	39708	41308	6.00
39309	1-8	39709	41309	8.10
39311	1 1/4-7	39711	41311	13.40
39312	1 1/2-6	39712	41312	15.70

Spherical Flange Assemblies

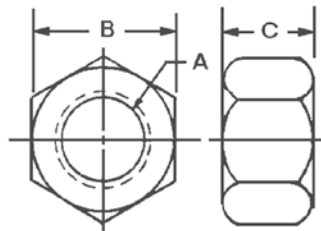
Metric



- Material: Low Carbon Steel
- Finish: Black Oxide
- Heat Treat: Case Hardened

Part Number	A	Across Flats B	Washer P/N C	Wt. (kg) 10 pcs.
39352	M6 x 1.0	10	41302	.07
39353	M8 x 1.25	13	41303	.14
39354	M10 x 1.5	17	41304	.30
39355	M12 x 1.75	19	41305	.66
39356	M16 x 2.0	24	41306	1.10
39357	M20 x 2.5	30	41357	1.80

Heavy Duty Hex Nuts



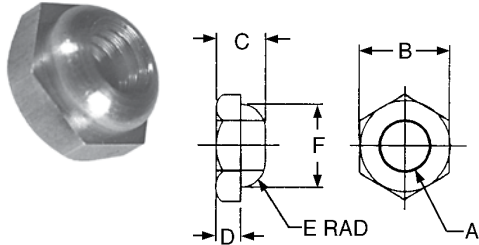
- Finish: Black Oxide
- Grade 8, Hardness HRC of 28-38

Part Number	A	B	C	Wt. (lbs) 100 Pcs.
20711	1/4-20	7/16	7/32	.74
20712	5/16-18	1/2	17/64	1.10
20713	3/8-16	9/16	21/64	1.60
20714	1/2-13	3/4	7/16	3.75
20716	5/8-11	15/16	35/64	7.33
20717	3/4-10	1 1/8	41/64	11.90
20718	7/8-9	1 5/16	3/4	19.00
20719	1-8	1 1/2	55/64	28.30

WORKHOLDING COMPONENTS



Stainless Steel Hex Head Equalizing Nuts



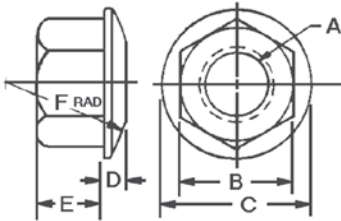
• Material: 303 Stainless

Part Number	A	B	C	D	E	F
12311	10-32	7/16	5/16	5/32	1/8	3/8
12312	1/4-20	1/2	5/16	5/32	1/8	7/16
12313	5/16-18	9/16	5/16	5/32	1/8	1/2
12314	3/8-16	11/16	3/8	3/16	3/16	5/8

Spherical Flange Nuts



- Material: Low Carbon Steel
- Finish: Black Oxide
- Heat Treat: Case Hardened
- Thread: 2B-UNC, Class 6h



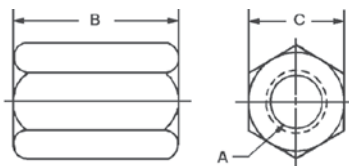
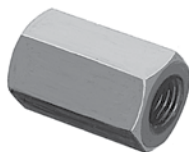
Part Number	A	B	C	D	E	F	Wt. (lbs) 10 Pcs.
39701	10-24	3/8	1/2	3/32	1/4	3/4	.10
39702*	1/4-20	1/2	5/8	3/32	1/4	1	.12
39703*	5/16-18	9/16	3/4	1/8	9/32	1	.21
39704*	3/8-16	11/16	7/8	1/8	13/32	1 1/2	.50
39705*	1/2-13	7/8	1 1/8	3/16	1/2	2	1.00
39706*	5/8-11	1 1/16	1 3/8	7/32	5/8	2 1/4	1.82
39707*	3/4-10	1 1/4	1 5/8	1/4	3/4	2 1/2	3.10
39708*	7/8-9	1 7/16	1 3/4	1/4	7/8	2 1/2	4.35
39709*	1-8	1 5/8	2	1/4	1	3 1/2	5.90
39711	1 1/4-7	1 13/16	2 1/4	5/16	1 1/16	4	7.20
39712	1 1/2-6	2 3/16	2 3/4	5/16	1 3/16	4 1/2	11.60

*Conforms to TCMA.

Part Number	A	B	C	D	E	F	Wt. (kg) 10 pcs.
39752	M6 x 1.0	10	16	2	6	25	.05
39753	M8 x 1.25	13	19	3	7	25	.10
39754	M10 x 1.5	17	22	4	10	38	.23
39755	M12 x 1.75	19	25	5	13	51	.50
39756	M16 x 2.0	24	32	6	16	57	.83
39757	M20 x 2.5	30	38	6	19	64	1.41



Coupling Nuts



- Material: Low Carbon Steel
- Finish: Black Oxide
- Heat Treat: Case Hardened
- Thread: 2B-UNC

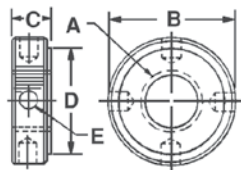
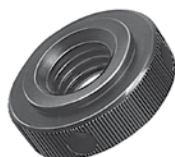
Part Number	A	B	C	Wt. (lbs) 10 Pcs.
18711*	3/8-16	1	1 1/16	.94
18712*	1/2-13	1 1/4	7/8	2.00
18713*	5/8-11	1 5/8	1 1/16	3.40
18714*	3/4-10	1 7/8	1 1/4	5.65
18715	7/8-9	2 1/4	1 7/16	8.60
18716	1-8	2 1/2	1 5/8	12.50

*Conforms to TCMA.

Metric

Part Number	A	B	C	Wt. (kg) 10 Pcs.
18761	M10	25	16	.05
18762	M12	32	19	.81
18763	M16	41	24	1.55
18764	M20	51	27	2.6

Knurled Lock Nuts

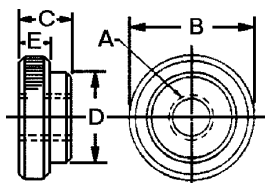


Most convenient for quick thread locking on your jig and fixture work. Straight knurled radius provides sure, non-slip finger grip in oily conditions. Faces are square with threads which assures a large locking surface.

- Material: Low Carbon Steel
- Finish: Black Oxide
- Heat Treat: Case Hardened
- Thread: 2B-UNC

Part Number	A	B	C	D	E	Wt. (lbs) 10 Pcs.
28101	3/8-16	1	3/8	3/4	.188	.62
28102	1/2-13	1 1/4	7/16	1	.257	1.10
28103	5/8-11	1 3/8	7/16	1 1/8	.257	1.10
28104	3/4-10	1 3/4	9/16	1 1/2	.316	2.50
28105	1-8	2	9/16	1 3/4	.316	3.10

Check Nuts



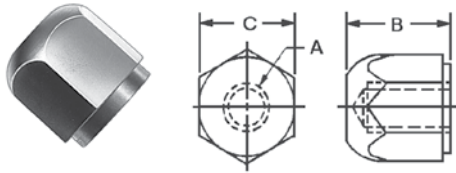
Multi-use Locknut for hand tightening applications

- Material: Low Carbon Steel
- Finish: Black Oxide
- Heat Treat: Case Hardened
- Thread: 2B-UNC

Part Number	A	B	C	D	E	Wt. (lbs) 10 Pcs.
16901	10-24	3/4	7/32	1/2	5/32	.15
16902	1/4-20	3/4	7/32	1/2	5/32	.15
16903	5/16-18	3/4	5/16	1/2	1/4	.21
16904	3/8-16	3/4	5/16	1/2	1/4	.21
16905	1/2-13	1	3/8	3/4	1/4	.47



Acorn Nuts



Acorn nuts are used to cover threaded ends to protect them from dirt, grit or damage to the thread.

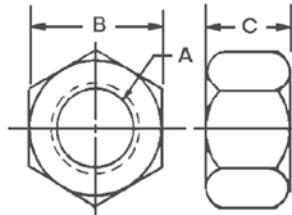
- Material: Low Carbon Steel
- Finish: Black Oxide
- Heat Treat: Case Hardened
- Thread: 2B-UNC

Part Number	A	B	C	Wt. (lbs) 10 Pcs.
10501	5/16-18	5/8	5/8	.44
10502	3/8-16	3/4	3/4	.78
10503	1/2-13	15/16	7/8	1.25
10504	5/8-11	1 3/16	1 1/16	2.35

Stainless Steel Nuts

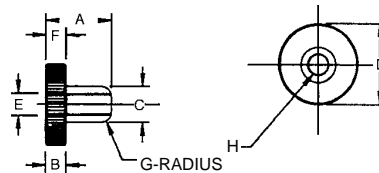


- Material: 300 Series Stainless Steel



Part Number	A	B	C
12321	10-32	3/8	1/8
12322	1/4-20	7/16	3/16
12323	5/16-18	1/2	9/32
12324	3/8-16	9/16	11/32

Stainless Steel Knurled Equalizing Nuts

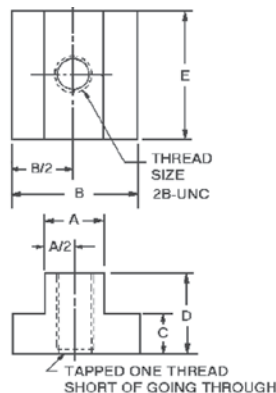


For use with stainless steel equalizing "C" washer. See page 271.

Part Number	A	B	C	D	E	F	G	H
12301	3/4	3/16	3/8	3/4	13/64	1/4	1/8	10-32
12302	13/16	1/4	7/16	1	17/64	1/4	1/8	1/4-20



T-Slot Nuts



Jergens Feature:

Jergens Table-Saver design provides a safety-stop feature to prevent turning stud into tableways.

- Material: Low Carbon Steel, 303 Stainless
- Finish: Black Oxide
- Threads: 2B-UNC (Inch); Class 6h (Metric)
- Heat Treat: Case Hardened
- Available in metric sizes. See below.

Part Number	Thread	T-slot Width A	B	C	D	E	Wt. (lbs) 10 Pcs.
*43302**	3/8-16	7/16	11/16	7/32	1/2	7/8	0.50
*43303**	3/8-16	1/2	7/8	9/32	1/2	7/8	.070
43301	3/8-16	9/16	7/8	1/4	1/2	7/8	0.70
*43305**	1/2-13	9/16	7/8	11/32	5/8	1 1/8	1.20
*43306	1/2-13	5/8	1	11/32	5/8	1 1/8	1.50
*43304	1/2-13	11/16	1 1/8	7/16	3/4	1 1/4	2.10
*43308**	5/8-11	11/16	1 1/8	7/16	3/4	1 1/4	1.14
*43309	5/8-11	3/4	1 1/4	15/32	3/4	1 1/4	1.60
*43307	5/8-11	13/16	1 1/4	9/16	1	1 1/2	3.11
*43311**	3/4-10	13/16	1 1/4	9/16	1	1 1/2	3.60
43312	3/4-10	7/8	1 1/2	9/16	1	1 1/2	4.10
*43310	3/4-10	1 1/16	1 5/8	1 1/16	1 1/4	2	7.20
43313**	7/8-9	1	1 5/8	5/8	1 1/4	2	7.30
43314	7/8-9	1 1/16	1 3/4	5/8	1 1/4	2	8.00

*Conforms to TCMA.
**Not Hardened

Metric

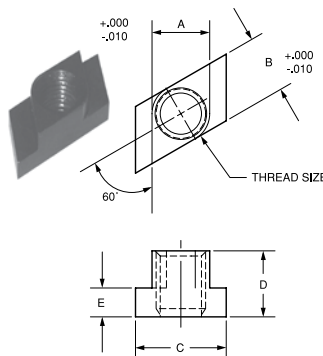
Part Number	Thread	T-slot Width A	B	C	D	E	Material
43372	M10x1.5	12	19	7	13	25	Steel
43373	M10x1.5	14	22	9	16	29	Steel
43374	M10x1.5	16	25	9	16	29	Steel
43375	M12x1.75	14	22	9	16	29	Steel
43376	M12x1.75	16	25	9	16	29	Steel
43377	M12x1.75	18	29	11	19	32	Steel
43378	M16x2.0	18	29	11	19	32	Steel
43379	M16x2.0	20	32	14	25	38	Steel
43380	M16x2.0	22	35	14	25	38	Steel
43381	M20x2.5	22	35	14	25	38	Steel
43382	M20x2.5	24	38	16	25	44	Steel
43383	M20x2.5	28	41	18	29	51	Steel

Stainless Steel

Part Number	Thread	T-slot Width A	B	C	D	E
43402	3/8-16	7/16	3/4	7/32	1/2	1
43403	3/8-16	1/2	7/8	1/4	5/8	7/8
43405	1/2-13	9/16	7/8	5/16	3/4	1 1/4
43406	1/2-13	5/8	1	3/8	3/4	1 1/4
43408	5/8-11	11/16	1 1/4	15/32	1	1 1/2
43409	5/8-11	3/4	1 1/4	17/32	1 1/4	1 1/2
43411	3/4-10	13/16	1 1/2	9/16	1	1 3/4
43410	3/4-10	1 1/16	1 5/8	9/16	1	1 3/4

Kwik-Turn T-Slot Nuts

- 1/4 turn design allows the Kwik-Turn to be installed from the top of the T-Slot, in order to avoid uninstallation of set-ups when additional nuts and studs are required
- Material: Low Carbon Steel,
- Finish: Black Oxide
- Threads: 2B-UNC (Inch)
- Heat Treat: Case Hardened



Part Number	Thread	T-Slot	A	B	C	D	E	Wt. (lbs) 10 pcs
43332**	3/8-16	7/16	.432	.432	11/16	1/2	7/32	0.27
43333	3/8-16	1/2	.495	.495	7/8	1/2	9/32	0.45
43334**	1/2-13	11/16	.683	.683	1-1/8	3/4	7/16	0.58
43335	1/2-13	9/16	.562	.562	7/8	5/8	11/32	0.79
43336	1/2-13	5/8	.620	.620	1	5/8	11/32	1.26
43338**	5/8-11	11/16	.683	.683	1-1/8	3/4	7/16	1.08
43339	5/8-11	3/4	.745	.745	1-1/4	3/4	15/32	1.44
43345	3/4-10	1	.995	.995	1-5/8	1	5/8	3.50

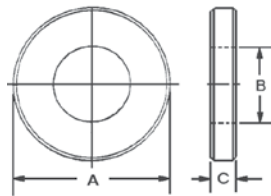
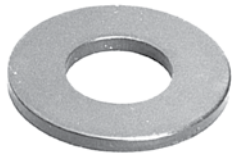
Jergens Feature:

Jergens Table-Saver design provides a safety-stop feature to prevent turning stud into tableways.

**Not Hardened



Flat Washers



- Material: Cold Rolled Low Carbon Steel, 303 Stainless
- Finish: Black Oxide
- Heat Treat: Carbon Nitride to 60
- Flat and parallel within .005" (0.13mm)

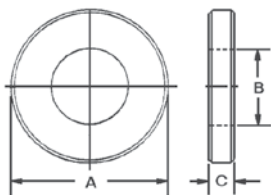
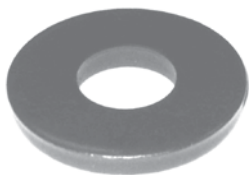
Part Number	A	B	C	Bolt Size	Wt. (lbs) 10 Pcs.
31901	1/2	13/64	3/32	3/16	.04
31902*	5/8	9/32	1/8	1/4	.05
31903*	3/4	11/32	1/8	5/16	.10
31904*	7/8	13/32	1/8	3/8	.21
31905*	1 1/8	17/32	1/8	1/2	.42
31906*	1 3/8	21/32	1/8	5/8	.63
31907*	1 5/8	25/32	5/32	3/4	1.10
31908*	1 3/4	29/32	5/32	7/8	1.20
31909*	2	1 1/32	3/16	1	1.70
31910	2 1/2	1 9/32	9/32	1 1/4	2.20

*Conforms to TCMA

Stainless Steel

Part Number	A	B	C	Bolt Size
32001	7/16	.196	5/64	3/16
32002	5/8	17/64	3/32	1/4
32003	11/16	11/32	1/8	5/16
32004	7/8	25/64	1/8	3/8
32005	1 1/8	17/32	1/8	1/2
32006	1 1/4	21/32	1/8	5/8
32007	1 1/2	25/32	5/32	3/4

Heavy Duty Flat Washers



- Material: High Carbon Steel
- Finish: Black Oxide
- Heat Treat: Rc 40-45 (Through Hardened)
- Flat & Parallel within .005" (.01mm)

Jergens Feature:

Made from high-carbon through-hardened steel which makes them up to 50% stronger than standard heavy duty washers. Also more fracture resistant under heavy loads.

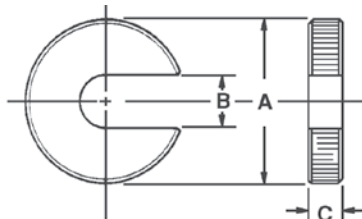
Part Number	A	B	C	Bolt Size	Wt. (lbs) 10 Pcs.
31967	5/8	9/32	3/16	1/4	0.72
31968	3/4	11/32	3/16	5/16	0.79
31969	7/8	13/32	3/16	3/8	0.87
31960	1 1/2	17/32	7/32	1/2	1.00
31961	1 1/2	21/32	7/32	5/8	0.88
31962	1 7/8	25/32	1/4	3/4	1.61
31963	2 1/8	29/32	1/4	7/8	2.31
31964	2 1/2	1 1/16	1/4	1	3.56
31965	2 1/2	1 5/16	1/4	1 1/4	3.98
31966	2 3/4	1 9/16	1/4	1 1/2	4.20

Metric Dimensions

Part Number	A	B	C	Bolt Size	Wt. (kg) 10 Pcs.
31961	38	17	5.5	16	0.40
31962	48	20	6.5	18	0.73
31963	54	23	6.5	20	1.05
31964	64	27	6.5	24	1.62



Washers "C" Washers



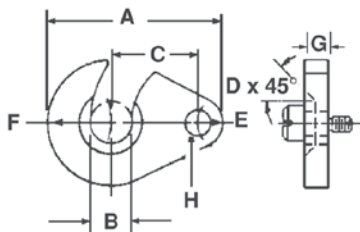
The "C" Washers are ground parallel on both surfaces with a knurled O.D.

- Material: Low Carbon Steel
- Finish: Black Oxide
- Heat Treat: Case Hardened
- Faces: Ground Parallel

Part Number	A	B	C	Wt. (lbs)
17701*	3/4	9/32	1/4	.02
17702*	1	9/32	1/4	.04
17703*	1 1/4	9/32	1/4	.07
17704*	1 1/4	13/32	3/8	.09
17705*	1 1/2	13/32	3/8	.14
17706*	1 3/4	13/32	3/8	.20
17707*	1 7/8	17/32	3/8	.17
17708*	2 1/4	17/32	3/8	.35
17709*	2 1/8	21/32	3/8	.32
17710	2 1/2	21/32	3/8	.53
17711*	2 1/2	25/32	7/16	.55

*Conforms to TCMA

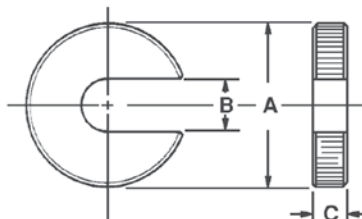
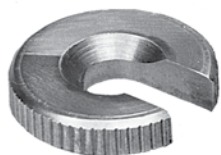
Equalizing Swing "C" Washer Stainless Steel



Part Number	A	B	C	D	Radius		+ .0000 - .0015 G	+ .0005 - .0000 H
					E	F		
12341	1 1/8	13/64	9/16	5/64	3/16	3/8	.1870	.1875
12342	1 1/4	17/64	5/8	3/32	3/16	7/16	.1870	.1875
12343	1 1/2	21/64	3/4	1/8	1/4	1/2	.2495	.250
12344	1 3/4	25/64	7/8	1/8	1/4	5/8	.2495	.250

• Material: 303 Stainless

Equalizing "C" Washers Stainless Steel



Part Number	A	B	C	Wt. lbs
12331	3/4	7/32	3/16	.02
12332	7/8	9/32	3/16	.04
12333	1	11/32	1/4	.04
12334	1 1/4	13/32	5/16	.04

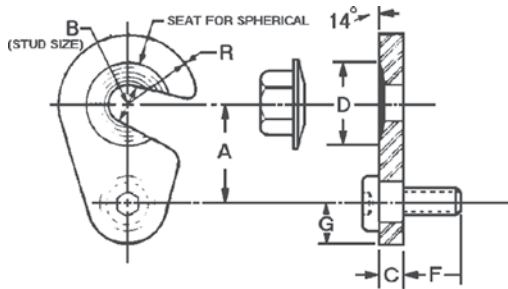
• Material: 303 Stainless



Washers Swing "C" Washer Assembly



The Swing "C" Washer has a concave center for self-locating around the stud, which prevents creeping while tightening, and allows acceptance of the mating spherical flange nuts. The Spherical Flange Nut assures that the washer cannot back out either during clamping or due to vibration during the operation. The shoulder screw has a nylon lock to prevent loosening of the screw during operation.

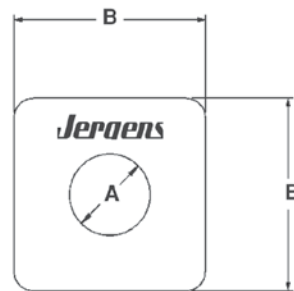
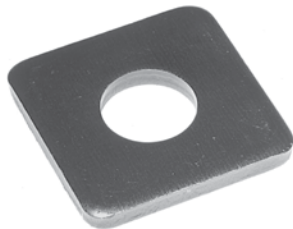


- Material: Low Carbon Steel
- Finish: Black Oxide
- Heat Treat: Case Hardened

Part Number	A	Stud Size B	C	D	E	F	G	R	Part Number		Wt. (lbs)
									Shoulder Screw	Spherical Flange Nut	
37301*	1	3/8	1/4	13/16	5/16-18	1/2	3/8	3/4	41707	39704	.12
37302	1 1/4	1/2	3/8	1 1/8	5/16-18	1/2	1/2	1	41708	39705	.30
37303*	1 1/2	5/8	3/8	1 5/16	3/8-16	5/8	9/16	1 1/8	41713	39706	.39
37304*	1 3/4	3/4	1/2	1 9/16	3/8-16	5/8	5/8	1 1/4	41714	39707	.72

*Conforms to TCMA

Heavy Duty Square Washers



- Material: Low Carbon Steel
- Finish: Black Oxide
- Heat Treat: Case Hardened

Part Number	±.010 A	±.010 B	Bolt Size	Thickness
31920	11/32	1 3/8	5/16	3/16
31921	13/32	1 3/8	3/8	3/16
31932	17/32	1 3/8	1/2	1/4
31933	17/32	2	1/2	1/4
31934	21/32	2	5/8	1/4
31935	13/16	2	3/4	1/4
31922	15/16	2	7/8	1/4
31936	13/16	2 1/2	3/4	1/4
31923	15/16	2 1/2	7/8	1/4
31937	1 1/16	2 1/2	1	1/4
31924	13/16	3	3/4	5/16
31925	15/16	3	7/8	5/16
31926	1 1/16	3	1	5/16
31927	1 1/16	3	1	3/8
31928	1 5/16	3	1 1/4	3/8
31929	1 9/16	3	1 1/2	3/8



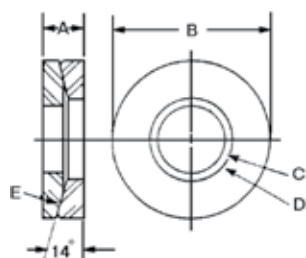
Washers Self Aligning Washers (Two-Piece)

Upper



Lower

These washers are ideally suited for joining machine sections which are out of parallel. They adjust themselves for a positive, firm base. With radius "E" and the angular 14° combination, line contact is formed around the two mating washer surfaces, allowing the two washers the ability to seek misalignment in the companion clamping members. The heat treated I.D. of the bottom concave piece is larger than the I.D. of the top convex section for free action. It is precision ground and the sharp edges are removed.



- Material: Low Carbon Steel
- Finish: Black Oxide
- Heat Treat: Case Hardened

Part Number	A	B	C	D	E	Bolt Size	Wt. (lbs)	Part Number	
								Upper	Lower
41101	3/16	1/2	13/64	15/64	3/4	3/16	.01	41501	41301
41102	3/16	5/8	17/64	19/64	1	1/4	.01	41502	41302
41103	7/32	3/4	11/32	23/64	1	5/16	.01	41503	41303
41104	7/32	7/8	13/32	15/32	1 1/2	3/8	.03	41504	41304
41105	9/32	1 1/8	17/32	19/32	2	1/2	.08	41505	41305
41106	3/8	1 3/8	21/32	23/32	2 1/4	5/8	.13	41506	41306
41107	13/32	1 5/8	25/32	27/32	2 1/2	3/4	.20	41507	41307
41108	17/32	1 3/4	29/32	31/32	2 1/2	7/8	.33	41508	41308
41109	9/16	2	1 1/32	1 3/32	3 1/2	1	.41	41509	41309
41110	5/8	2 1/4	1 5/32	1 7/32	3 1/2	1 1/8	.77	41510	41310
41111	5/8	2 1/4	1 9/32	1 11/32	4	1 1/4	.62	41511	41311
41112	11/16	2 3/4	1 17/32	1 19/32	4 1/2	1 1/2	.85	41512	41312

Part Number	
Upper	Lower
41501	41301
41502	41302
41503	41303
41504	41304
41505	41305
41506	41306
41507	41307
41508	41308
41509	41309
41510	41310
41511	41311
41512	41312

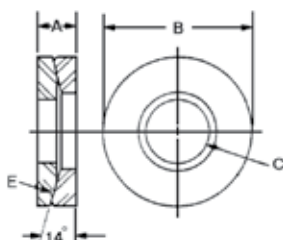
Metric Two-Piece Assemblies

Part Number	A	B	C	D	E	Bolt Size	Wt. (kg)
41102	5	16	6.5	7.5	25	M6	.01
41103	5.5	19	8.5	9	25	M8	.01
41104	5.5	22	10.5	12	38	M10	.01
41105	7	28	13.5	15	51	M12	.03
41106	9.5	35	17	18	57	M16	.06
41157	10.5	41	21	21.5	63.5	M20	.09

Single Units

Part Number	
Upper	Lower
41502	41302
41503	41303
41504	41304
41505	41305
41506	41306
41557	41357

Self Aligning Washers (Two-Piece) Stainless Steel



- Material: 303 Stainless

Part Number	A	B	C	E	Bolt Size	Wt. (lbs)
41202	3/16	5/8	9/32	3/4	1/4	.01
41203	1/4	3/4	11/32	1	5/16	.01
41204	1/4	7/8	13/32	1 1/4	3/8	.03
41205	5/16	1 1/8	17/32	1 1/2	1/2	.08
41206	5/16	1 3/8	21/32	1 3/4	5/8	.13
41207	3/8	1 5/8	25/32	2 1/4	3/4	.20



USAE™ Heavy Duty Flat Washers



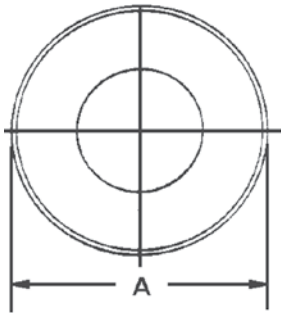
USS + SAE = USAE

What is a USAE™ Washer?

- It is a simple but effective idea that is long overdue.
- The Outside Diameter conforms to USS standards. This provides a washer that is up to 36% larger than standard hardened washers.

More Contact Area = More Holding Power

- The Inside Diameter conforms to SAE standards. The small ID provides a more precise fit on bolts, studs, etc.
- USAE Washers are also up to 37% thicker than standard hardened washers for greater strength.
- Washers are made from mild steel. They are case hardened to 60 HRC and have a black oxide finish.
- Bolt size is stamped on each washer for easy identification.



USAE™ Heavy Duty Flat Washers

Part No.	Bolt Size	A (OD)	B (ID)	C (Thickness)
FW00001	1/4	3/4	9/32	9/64
FW00002	5/16	7/8	11/32	9/64
FW00003	3/8	1	13/32	9/64
FW00004	1/2	1-3/8	17/32	5/32
FW00005	5/8	1-3/4	21/32	5/32
FW00006	3/4	2	13/16	1/4
FW00007	1	2-1/2	1-1/16	1/4

*Tolerances for all dimensions are +/- .010"



Replaceable Grippers Tapered – Hardened Steel



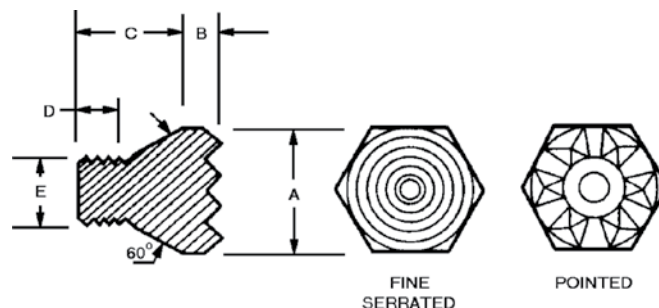
Pointed



Fine Serrated

- Material: 8620
- Finish: Black Oxide
- Heat Treat: Case Hardened
- Available in FixturePro™ Design Software

Jergens introduces a new concept in replaceable grippers. It is now easier to modify soft top jaws, strap clamps, or fixtures to hold irregularly shaped material. The grippers can be installed from one side, using a combination center drill, a tap, and a box wrench. There is no need to drill through holes from difficult to reach locations. Simply drill, tap, and install.



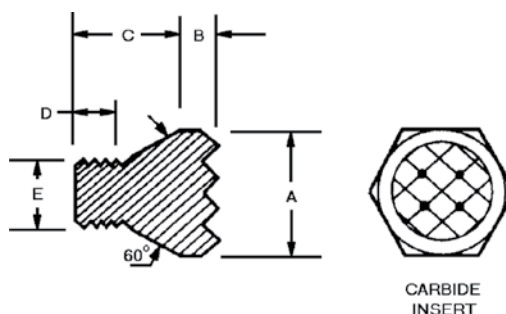
Hardened Steel Grippers

Part Number		Hex A	B	C	D	Thread E	Center Drill	Drill To Diameter
Serrated	Pointed							
23801	23811	5/16	.093	.32	.19	8-32	No. 4	.310
23802	23812	1/2	.125	.46	.25	1/4-28	No. 6	.498
23803	23813	3/4	.187	.70	.38	3/8-16	No. 8	.745

Tapered – Carbide Tipped



- Material: Body 8620
Insert, Carbide
- Finish: Zinc Plate
- Available in FixturePro™ Design Software



Carbide Tipped Grippers

Part Number	Hex A	B	C	D	Thread E	Center Drill	Drill To Diameter
23822	1/2	.125	.46	.25	1/4-28	No. 6	.498
23823	3/4	.187	.70	.38	3/8-16	No. 8	.745

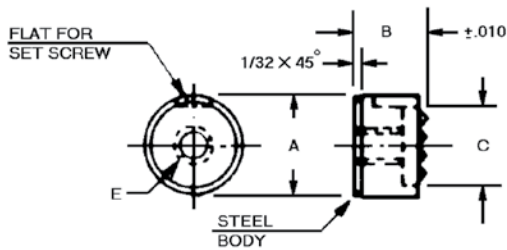
Replaceable Grippers



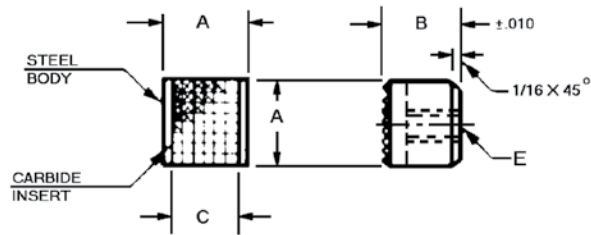
The Jergens Replaceable Grippers are available in Hardened High Speed Tool Steel or with Carbide Inserts. The points of the grippers embed themselves into the work piece giving greater holding power with less actual pressure. Jergens Grippers may be held in place using either a set screw on the flat of the gripper or the threaded hole in the back of the gripper.

Use Jergens Grippers to make hardened serrated jaws from Jergens soft top jaws or add the grippers to Jergens strap clamps for extra holding power. Use Jergens replaceable grippers anywhere that rough surfaces are being held in position for machining.

ROUND GRIPPERS



SQUARE GRIPPERS



- Material: Body, Low Carbon Steel
Insert, Carbide
- Finish: Zinc Plate
- Serrations: .09" x 90°
- Available in FixturePro™ Design Software

Carbide Tipped Grippers

Part Number	Style	A	B	C	E	Wt. (lbs) 10 Pcs.
23708	Round	3/8	3/8	5/16	10-32 x 7/32	.15
23707	Round	1/2	3/8	3/8	10-32 x 7/32	.20
23702	Round	1/2	1/2	3/8	10-32 x 11/32	.22
23703	Round	1/2	21/32	3/8	10-32 x 7/16	.30
23704	Round	5/8	3/8	1/2	1/4-28 x 7/32	.36
23705	Round	3/4	3/8	5/8	1/4-28 x 7/32	.44
23706	Square	1/2	3/8	13/32	10-32 x 1/4	.30

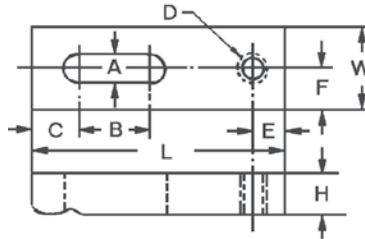
- Material: High Speed Tool Steel
- Finish: Black Oxide
- Heat Treat: Rc 60-62
- Serrations: .09" x 90°
- Available in FixturePro™ Design Software

Hardened Tool Steel Grippers

Part Number	Style	A	B	C	E	Wt. (lbs) 10 Pcs.
23710	Round	3/8	3/8	3/8	10-32 x 3/8	.15
23711	Round	1/2	3/8	1/2	10-32 x 3/8	.20
23712	Round	1/2	1/2	1/2	10-32 x 1/2	.22
23713	Round	1/2	21/32	1/2	10-32 x .651	.30
23714	Round	5/8	3/8	5/8	1/4-28 x 3/8	.36
23715	Round	3/4	3/8	3/4	1/4-28 x 3/8	.44
23716	Square	1/2	3/8	1/2	10-32 x 3/8	.30



Miniature Straps – Radius

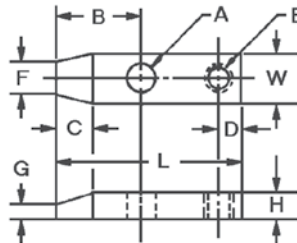


A light-duty strap with a specially designed radius end provides maximum pressure for extreme close-to-the-edge clamping. Features a tapped hole in the rear for knurled head thumb screw and a long slot for lateral adjustment.

- Material: Low Carbon Steel
- Finish: Black Oxide
- Heat Treat: Case Hardened
Rockwell 30N Scale 59-69

Part Number	Bolt Size	A	B	C	Thread Size D	E	F	W	H	L	Wt. (lbs) 10 Pcs.
29704	#10 or M5	7/32	7/16	5/16	10-24	3/16	1/4	1/2	1/4	1 1/2	.44
29705	#10 or M5	7/32	9/16	5/16	10-24	3/16	1/4	1/2	1/4	1 3/4	.44
29706	#10 or M5	7/32	11/16	5/16	10-24	3/16	1/4	1/2	1/4	2	.44

Miniature Straps – Flat



A "chisel nose", flat strap for light-duty holding where clamping is restricted. Features a tapped hole in back for heel rest and a drilled hole for stud clearance.

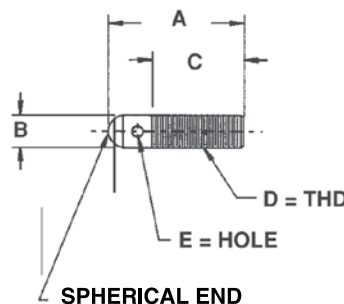
- Material: Low Carbon Steel
- Finish: Black Oxide
- Heat Treat: Case Hardened
Rockwell 30N Scale 59-69

Part Number	A	B	C	D	Thread Size E	F	G	W	H	L	Wt. (lbs) 10 Pcs.
29701	7/32	5/8	3/8	3/16	10-24	1/4	1/8	1/2	1/4	1 1/2	.47
29702	9/32	7/8	3/8	3/16	10-24	1/4	1/8	1/2	1/4	2	.62
29703	9/32	1 1/8	3/8	3/16	10-24	1/4	1/8	1/2	5/16	2 1/2	.94

Adjustable Clamp Rests Stainless Steel



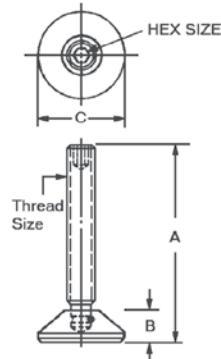
- Material: 303 Stainless



Part Number	A	B	C	D	E
12231	3/4	.190	1/2	10-32	1/16
12232	1 1/4	.190	1	10-32	1/16
12233	1	1/4	11/16	1/4-20	5/64
12234	1 1/2	1/4	1 3/16	1/4-20	5/64
12235	1 3/8	5/16	1 1/8	5/16-18	3/32
12236	1 7/8	5/16	1 5/8	5/16-18	3/32
12237	1 5/8	3/8	1 3/8	3/8-16	1/8
12238	2 1/8	3/8	1 7/8	3/8-16	1/8



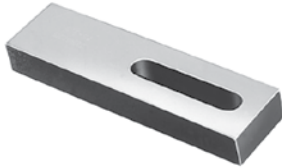
Adjustable Clamp Heels



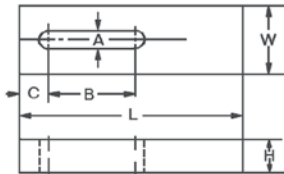
- Material: Stud, Stressproof® Pad, Low Carbon Steel
- Finish: Black Oxide
- Thread: 2B-UNC (Inch); 6h (Metric)

Part Number	Thread Size	A	B	C	Hex Key Size	Wt. (lbs)
47213	3/8-16	2	5/8	1 1/4	3/16	.20
47214	3/8-16	3	5/8	1 1/4	3/16	.30
47215	3/8-16	4	5/8	1 1/4	3/16	.40
47201	1/2-13	3	5/8	1 1/2	1/4	.40
47202	1/2-13	4	5/8	1 1/2	1/4	.50
47203	1/2-13	5	5/8	1 1/2	1/4	.60
47204	5/8-11	4	3/4	1 3/4	5/16	.70
47205	5/8-11	5	3/4	1 3/4	5/16	.80
47206	5/8-11	6	3/4	1 3/4	5/16	.90
47207	3/4-10	5	7/8	2	3/8	1.20
47208	3/4-10	6	7/8	2	3/8	1.35
47209	3/4-10	7	7/8	2	3/8	1.50
47210	1-8	4	1	2 1/2	9/16	1.90
47211	1-8	6	1	2 1/2	9/16	2.30

Plain Straps



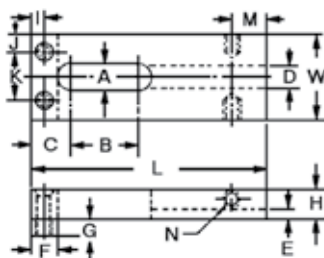
- Material: Low Carbon Steel, 2024 Aluminum



Part Number		Bolt Size	A	B	C	Width		H	L	Wt. (lbs)
Steel	Aluminum					Steel	Aluminum			
33111	33001	1/4 or M6	9/32	5/8	3/8	5/8	3/4	3/8	2	.09
33113	—	5/16 or M8	11/32	3/4	9/16	7/8	—	1/2	2 1/2	.18
33114	33004	5/16 or M8	11/32	1 1/4	9/16	7/8	1	1/2	3 1/2	.25
33115	—	3/8 or M10	13/32	1 1/8	11/16	1 1/4	—	5/8	3 1/2	.61
33116	33006	3/8 or M10	13/32	1 5/8	11/16	1 1/4	1 1/2	5/8	4 1/2	.90
33117	—	1/2 or M12	17/32	1 1/4	7/8	1 1/2	—	3/4	4 1/2	1.12
33118	33008	1/2 or M12	17/32	2	7/8	1 1/2	2	3/4	6	1.60
33119	—	5/8 or M16	21/32	1 1/2	1 1/16	1 3/4	—	7/8	5	1.75
33120	—	5/8 or M16	21/32	2 1/2	1 1/16	1 3/4	—	7/8	7	2.60
33121	—	3/4 or M19	25/32	1 1/2	1 1/8	1 3/4	—	1	5	2.00
33122	—	3/4 or M19	25/32	2 1/2	1 1/8	1 3/4	—	1	7	2.90



Padded Straps



Jergens Feature:

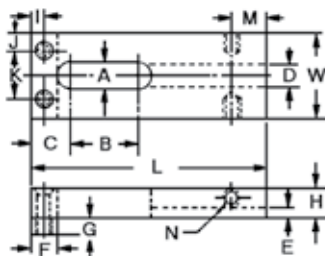
The elongated slot allows for greater clamping force on the part. A steel pad is standard. Plastic or brass pads may be ordered separately for both inch and metric straps. See page 243.

- Material: Low Carbon Steel
- Finish: Low Carbon Steel
- Heat Treat: Case Hardened
Rockwell 30N Scale 59-69

Part Number	Bolt Size	A	B	C	D	E	F	G	I	J	K	M	N	W	H	L	Wt. (lbs)
37101	1/4 or M6	9/32	5/8	3/8	1/4	1/8	1/4	1/8	9/64	9/64	11/32	—	—	5/8	3/8	2	.09
37103	3/8 or M10	13/32	1 1/8	11/16	3/8	3/16	1/2	1/4	1/4	5/16	5/8	1/2	5/16-18	1 1/4	5/8	3 1/2	.65
37105	3/8 or M10	13/32	1 5/8	11/16	3/8	3/16	1/2	1/4	1/4	5/16	5/8	1/2	5/16-18	1 1/4	5/8	4 1/2	.83
37107*	1/2 or M12	17/32	1 1/4	7/8	3/8	1/4	5/8	3/8	5/16	3/8	3/4	1/2	5/16-18	1 1/2	3/4	4 1/2	1.24
37110*	1/2 or M12	17/32	2	7/8	3/8	1/4	5/8	3/8	5/16	3/8	3/4	1/2	5/16-18	1 1/2	3/4	6	1.63
37111*	5/8 or M16	21/32	1 1/2	1 1/16	3/8	1/4	3/4	1/2	3/8	1/2	3/4	3/4	5/16-18	1 3/4	7/8	5	1.88
37113*	5/8 or M16	21/32	2 1/2	1 1/16	3/8	1/4	3/4	1/2	3/8	1/2	3/4	3/4	5/16-18	1 3/4	7/8	7	2.63
37114*	3/4 or M20	25/32	1 1/2	1 1/8	3/8	1/4	3/4	1/2	3/8	1/2	3/4	3/4	5/16-18	1 3/4	1	5	2.12
37116*	3/4 or M20	25/32	2 1/2	1 1/8	3/8	1/4	3/4	1/2	3/8	1/2	3/4	3/4	5/16-18	1 3/4	1	7	2.88

*Carbide Gripper Kits are available, contact Technical Sales Department for details. Gripper Part #23704.

Padded Straps Metric



- Material: Low Carbon Steel
- Finish: Low Carbon Steel
- Heat Treat: Case Hardened
Rockwell 30N Scale 59-69

Metric

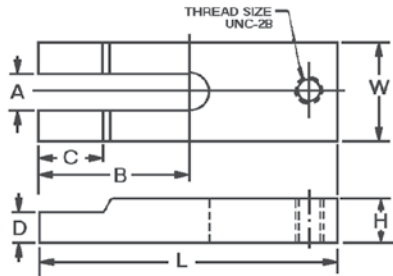
Part Number	Bolt Size	A	B	C	D	E	F	G	M	N	W	H	I	J	K	L	Wt (kg)
37151	M6	7	16	10	6	3	6	3	—	—	16	9	4	4	9	50	.04
37153	M8	10	28	17	10	5	13	6	13	M8	32	16	6	8	16	89	.29
37157	M10	13	32	22	10	6	16	10	13	M8	38	19	8	10	19	114	.38
37161	M16	17	38	27	10	6	19	13	19	M8	44	22	10	13	19	127	1.19
37164	M20	20	38	29	10	6	19	13	19	M8	44	25	10	13	19	127	1.31



Long Slot U-Straps

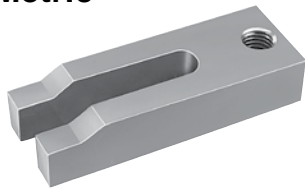


- Material: Low Carbon Steel
- Finish: Black Oxide
- Thread: UNC-2B (Inch); 6h (Metric)
- Heat Treat: Case Hardened Rockwell 30N Scale 59-69
- Designed to be used with Adjustable Clamp Heels, found on page 278, and Clamp Assembly Heels on page 238

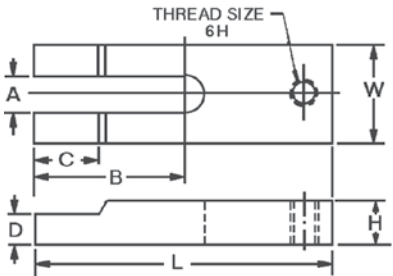


Part Number	Bolt Size	A	B	C	D	Thread Size	W	H	L	Wt. (lbs)
47021	1/2 or M12	17/32	2 1/2	—	—	1/2-13	1 1/2	3/4	4	1.18
47022	1/2 or M12	17/32	3 1/2	—	—	1/2-13	1 1/2	3/4	6	1.92
47023	5/8 or M16	21/32	2 7/16	5/8	3/4	5/8-11	1 3/4	7/8	4	1.52
47024	5/8 or M16	21/32	3 15/16	5/8	3/4	5/8-11	1 3/4	7/8	7	2.73
47025	3/4 or M20	25/32	3 1/2	5/8	3/4	3/4-10	2	1	6	2.96
47026	3/4 or M20	25/32	5	5/8	3/4	3/4-10	2	1 1/4	8	3.99
47027	1 or M24	1 1/16	5 1/2	5/8	3/4	1-8	2 1/2	1 1/2	10	8.12

Long Slot U-Straps Metric



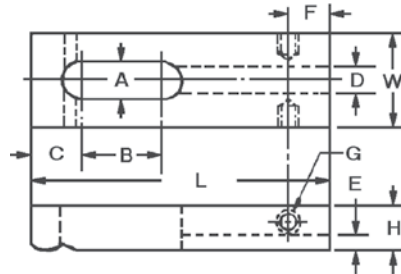
- Material: Low Carbon Steel
- Finish: Black Oxide
- Thread: UNC-2B (Inch); 6h (Metric)
- Heat Treat: Case Hardened Rockwell 30N Scale 59-69
- Designed to be used with Adjustable Clamp Heels, found on page 278, and Clamp Assembly Heels on page 238



Part Number	Bolt Size	A	B	C	D	Thread Size	W	H	L	Wt (kg)
47071	M12	13	64	—	—	M12	38	19	100	.54
47072	M12	13	89	—	—	M12	38	19	150	.87
47073	M16	17	62	16	19	M16	44	22	100	.70
47074	M16	17	100	16	19	M16	44	22	175	1.24
47075	M20	20	89	16	19	M20	50	25	150	1.34
47076	M20	20	127	16	19	M20	50	32	200	1.81
47077	M24	27	140	16	19	M24	64	38	250	3.68



Radius Straps



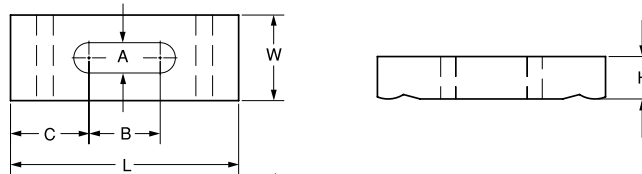
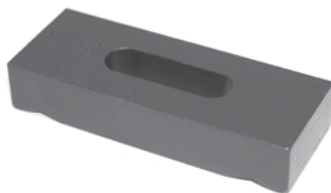
Jergens Feature:

The elongated slot allows for greater clamping force on the part.

- Material: Low Carbon Steel
- Finish: Black Oxide
- Heat Treat: Case Hardened
Rockwell 30N Scale 59-69

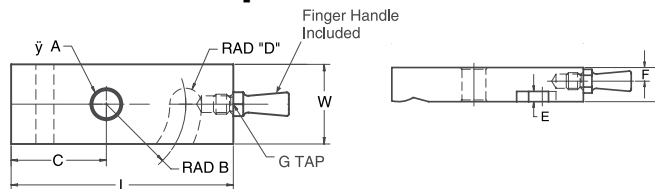
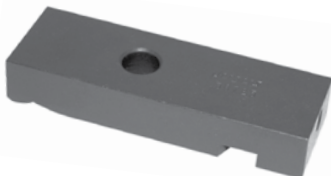
Part Number	Bolt Size	A	B	C	D	E	F	G	W	H	L	Wt. (lbs)
36703	1/4 or M6	9/32	5/8	3/8	1/4	1/8	—	—	5/8	3/8	2	0.09
36708	1/4 or M6	9/32	1	3/8	1/4	1/8	—	—	5/8	3/8	2-1/2	0.11
36717	5/16	11/32	3/4	9/16	1/4	1/4	—	—	7/8	1/2	2-1/2	0.20
36718	5/16	11/32	1-1/4	9/16	1/4	1/4	—	—	7/8	1/2	3-1/2	0.25
36704	3/8 or M10	13/32	1-1/8	11/16	3/8	3/16	1/2	5/16-18	1-1/4	5/8	3-1/2	0.61
36719	3/8 or M10	13/32	1-5/8	11/16	3/8	3/16	1/2	5/16-18	1-1/4	5/8	4-1/2	0.71
36705	1/2 or M12	17/32	1-1/4	7/8	3/8	1/4	1/2	5/16-18	1-1/2	3/4	4-1/2	1.12
36714	1/2 or M12	17/32	2	7/8	3/8	1/4	1/2	5/16-18	1-1/2	3/4	6	1.56
36706	5/8 or M16	21/32	1-1/2	1-1/16	3/8	1/4	3/4	5/16-18	1-3/4	7/8	5	1.75
36715	5/8 or M16	21/32	2-1/2	1-1/16	3/8	1/4	3/4	5/16-18	1-3/4	7/8	7	2.44
36707	3/4	25/32	1-1/2	1-1/8	3/8	1/4	3/4	5/16-18	1-3/4	1	5	2.00
36716	3/4	25/32	2-1/2	1-1/8	3/8	1/4	3/4	5/16-18	1-3/4	1	7	2.70

Double End Radius Strap



Part Number	Bolt Size	A	B	C	H	W	L	Wt (lbs)
36728	1/2 or M12	17/32	1-1/4	1-3/8	3/4	1-1/2	4	0.80
36729	1/2 or M12	17/32	1-1/2	1-3/4	3/4	1-1/2	5	1.25
36730	5/8 or M16	21/32	1-1/2	2-1/4	7/8	1-3/4	6	2.20

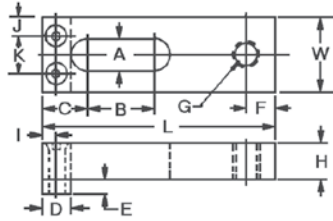
Swing Style Radius Nose Straps



Part Number	Bolt Size	A	B	C	D	E	F	G	W	H	L	Wt (lbs)
36723	1/4	5/16	11/16	1	1/8	1/8	n/a	n/a	5/8	3/8	2	0.09
36724	3/8	7/16	1-1/4	1-1/2	1/4	3/16	1/4	5/16-18	1-1/4	5/8	3-1/2	0.61
36725	1/2	9/16	1-7/8	1-3/16	1/4	1/4	1/4	5/16-18	1-1/2	3/4	4-1/2	1.12
36726	5/8	11/16	2-3/16	2-1/16	1/4	1/4	1/4	5/16-18	1-3/4	7/8	5	1.75
36727	3/4	13/16	2-3/16	2-1/16	1/4	1/4	1/4	5/16-18	1-3/4	1	5	2.00



Tapped Straps



Jergens Feature:

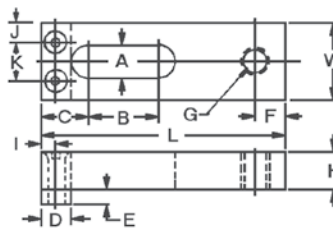
The elongated slot allows for greater clamping force on the part. A steel pad is standard. Plastic or brass pads may be ordered separately, see page 243.

- Material: Low Carbon Steel
- Finish: Black Oxide
- Thread: 2B-UNC
- Heat Treat: Case Hardened
Rockwell 30N Scale 59-69
- Tapped for use with adjustable clamp heel found on page 278

Part Number	Bolt Size	A	B	C	D	E	F	Thread Size G	I	J	K	W	H	L	Wt. (lbs)
36911	1/4 or M6	9/32	5/8	3/8	1/4	1/8	7/32	1/4-20	9/64	9/64	11/32	5/8	3/8	2	.10
36913	5/16 or M8	11/32	3/4	9/16	3/8	3/16	1/4	5/16-18	3/16	3/16	1/2	7/8	1/2	2 1/2	.20
36914	5/16 or M8	11/32	1 1/4	9/16	3/8	3/16	1/4	5/16-18	3/16	3/16	1/2	7/8	1/2	3 1/2	.27
36915	3/8 or M10	13/32	1 1/8	11/16	1/2	1/4	3/8	3/8-16	1/4	5/16	5/8	1 1/4	5/8	3 1/2	.69
36916	3/8 or M10	13/32	1 5/8	11/16	1/2	1/4	3/8	3/8-16	1/4	5/16	5/8	1 1/4	5/8	4 1/2	.88
36917*	1/2 or M12	17/32	1 1/4	7/8	5/8	3/8	7/16	1/2-13	1/4	3/8	3/4	1 1/2	3/4	4 1/2	.70
36918*	1/2 or M12	17/32	2	7/8	5/8	3/8	7/16	1/2-13	1/4	3/8	3/4	1 1/2	3/4	6	.90

* Carbide Gripper Kits are available, contact Technical Sales Department for details. Gripper Part #23704.

Tapped Straps Metric



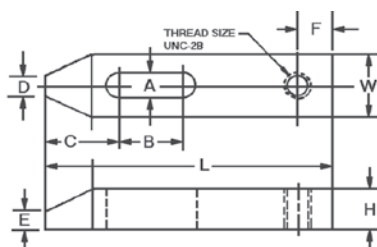
- Material: Low Carbon Steel
- Finish: Black Oxide
- Thread: 6h
- Heat Treat: Case Hardened
Rockwell 30N Scale 59-69
- Tapped for use with adjustable clamp heel found on page 278

Part Number	Bolt Size	A	B	C	D	E	F	Thread Size 6h G	I	J	K	W	H	L	Wt. (Kg)
36961	M6	7	16	9	6	3	5	M6	4	4	9	16	9	50	.05
36963	M8	9	19	14	9	5	6	M8	5	5	12	22	13	63	.11
36965	M10	10	28	17	13	6	9	M10	6	8	16	32	16	88	.37
36967	M12	13	31	22	16	9	11	M12	6	9	19	38	19	113	.47

* Carbide Gripper Kits are available, contact Technical Sales Department for details. Gripper Part #23704.



Taper Nose Straps



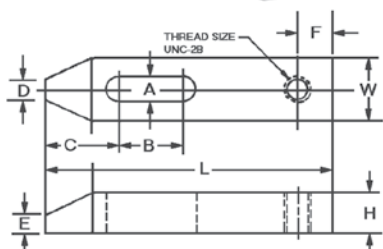
- Material: Low Carbon Steel
- Finish: Black Oxide
- Thread: UNC-2B
- Heat Treat: Case Hardened Rockwell 30N Scale 59-69
- Designed to be used with Adjustable Clamp Heels, found on page 278

Part Number	A	B	C	D	E	F	Thread Size	W	H	L	Wt. (lbs)
47119	13/32	1/2	13/16	3/8	3/16	7/16	3/8-16	1	1/2	3	.55
47120	13/32	1	15/16	3/8	3/16	7/16	3/8-16	1 1/4	5/8	4	.75
47123	13/32	1 1/2	15/16	3/8	3/16	7/16	3/8-16	1 1/4	5/8	5	.90
47124	17/32	1/2	1 1/16	1/2	1/4	7/16	1/2-13	1 1/4	5/8	3 1/2	.80
47125	17/32	1 1/4	1 3/16	1/2	3/8	7/16	1/2-13	1 1/4	3/4	4 1/2	1.10
47126	17/32	2	1 5/16	1/2	3/8	7/16	1/2-13	1 1/4	7/8	6	1.60
47127	21/32	1/2	1 3/16	5/8	1/4	1/2	5/8-11	1 1/4	5/8	4	1.80
47128	21/32	1 1/4	1 3/16	5/8	3/8	1/2	5/8-11	1 1/2	3/4	5	2.20
47129	21/32	2	1 5/16	5/8	3/8	1/2	5/8-11	1 1/2	7/8	7	3.10
47130	25/32	3/4	1 5/16	5/8	3/8	9/16	3/4-10	1 1/2	3/4	5	2.85
47131	25/32	1 1/2	1 1/2	5/8	3/8	9/16	3/4-10	1 1/2	1	6	3.40
47132	25/32	2 1/4	1 5/8	5/8	3/8	9/16	3/4-10	1 3/4	1 1/8	8	4.70
47134	1 1/16	2	2 5/8	7/8	5/8	11/16	1-8	2	1 1/2	10	9.55

Metric Taper Nose Straps



- Material: Low Carbon Steel
- Finish: Black Oxide
- Thread: 6h
- Heat Treat: Case Hardened Rockwell 30N Scale 59-69
- Designed to be used with Adjustable Clamp Heels, found on page 278

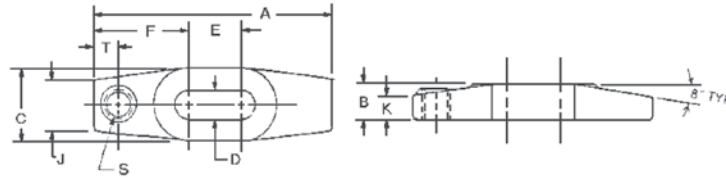


Part Number	A	B	C	D	E	F	Thread Size	W	H	L	Wt. (Kg)
47169	11	13	21	10	5	11	M10 x 1.5	25	13	75	.30
47175	13	33	30	13	10	11	M12 x 1.75	32	19	114	.60
47179	17	50	33	16	10	13	M16 x 2.0	38	22	175	1.70
47182	21	57	41	16	10	14	M20 x 2.5	44	29	200	2.53
47184	26	50	67	22	16	17	M24 x 3.0	50	38	250	5.15



Forged Strap Clamps

Heel Clamp



• Material: C-1030 or C-1035

Standard & Tapped Heel Clamps

Part Number		Bolt Size	A	B	C	D	E	F	J	K	S*	T	Wt. (lbs)
Standard	Tapped												
37201	37202	5/8 or M16	4	3/4	1 5/8	11/16	11/16	1 21/32	1 3/16	1/2	1/2-13	1/2	1.00
37203	37204	5/8 or M16	6	7/8	1 3/4	11/16	1 3/8	2 5/16	1 1/4	9/16	5/8-11	5/8	1.75
37205	37206	3/4 or M20	8	1 1/8	2 1/8	13/16	2	3	1 1/2	3/4	3/4-10	3/4	3.75
37207	37208	7/8 or M20	10	1 3/8	2 1/2	15/16	2 3/4	3 5/8	1 3/4	15/16	7/8-9	7/8	7.00

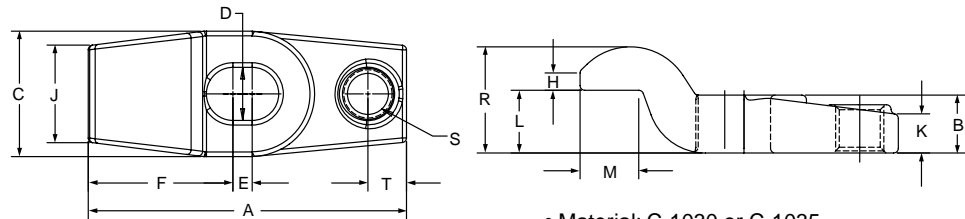
*Applicable to Tapped Clamp Only

Metric Standard & Tapped Heel Clamps

Part Number		Bolt Size	A	B	C	D	E	F	J	K	S*	T	Wt. (Kg)
Standard	Tapped												
37201	37252	M16	100	19	41	17	17	42	30	13	M12 x 1.75	13	.53
37203	37254	M16	150	22	44	17	35	59	32	14	M16 x 2.0	16	.94
37205	37256	M20	200	29	54	21	50	75	38	19	M20 x 2.5	19	2.0
37207	37258	M20	250	35	63	24	70	92	44	24	M24 x 3.0	22	3.8

*Applicable to Tapped Clamp Only

Gooseneck Clamp



• Material: C-1030 or C-1035

Standard & Tapped Gooseneck Clamps

Part Number		Bolt Size	A	B	C	D	E	F	H	J	K	L	M	R	S*	T	Wt. (lbs)
Standard	Tapped																
37211	37212	5/8	4	3/4	1 5/8	11/16	1/4	1 7/8	3/8	1 3/16	1/2	13/16	3/4	1 7/16	5/8-11	1/2	1.00
37213	37214	5/8	6	7/8	1 3/4	11/16	1	2 1/2	7/16	1 1/4	9/16	15/16	1 1/8	1 9/16	5/8-11	5/8	2.00
37215	37216	3/4	8	1 1/8	2 1/8	13/16	1 5/8	3 3/16	9/16	1 1/2	3/4	1 1/8	1 1/4	2 1/16	5/8-11	1	4.25

*Applicable to Tapped Clamp Only

Part Number		Bolt Size	A	B	C	D	E	F	H	J	K	L	M	R	S*	T	Wt. (Kg)
Standard	Tapped																
37211	37262	M16	100	19	41	17	6	48	10	30	13	20	19	37	M16 x 2.013		.53
37213	37264	M16	150	22	44	17	25	63	11	32	14	24	28	40	M16 x 2.016		1.4
37215	37266	M20	200	29	54	21	41	81	14	38	19	28	32	52	M16 x 2.025		2.3

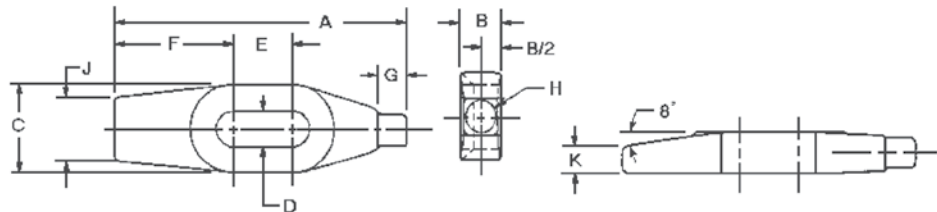
*Applicable to Tapped Clamp Only

WORKHOLDING COMPONENTS



Forged Strap Clamps

Finger Clamp



• Material: C-1030 or C-1035

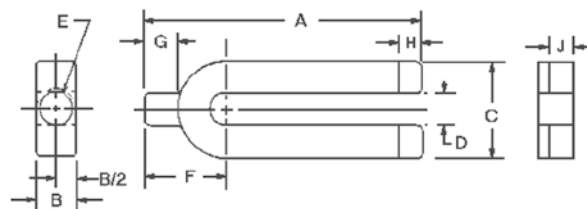
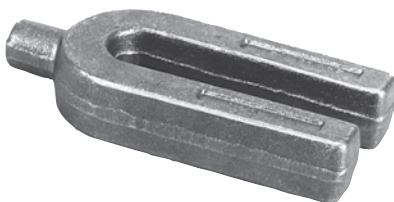
Part Number	Bolt Size	A	B	C	D	E	F	G	H	J	K	Wt. (lbs)
37221	5/8 or M16	4	3/4	1 5/8	11/16	11/16	1 21/32	1/2	1/2	1 3/16	7/16	.75
37223	5/8 or M16	6	7/8	1 3/4	11/16	1 1/4	2 3/8	5/8	5/8	1 1/4	1/2	1.50
37225	3/4 or M20	8	1 1/8	2 1/8	13/16	1 3/4	3 1/8	3/4	3/4	1 1/2	5/8	3.00

Metric

Part Number	Bolt Size	A	B	C	D	E	F	G	H	J	K	Wt. (Kg)
37221	M16	100	19	41	17	17	42	13	13	30	11	.40
37223	M16	150	22	44	17	32	59	16	16	32	13	.81
37225	M20	200	29	54	21	44	79	19	19	38	16	1.6

Forged Strap Clamps

“U” Clamp



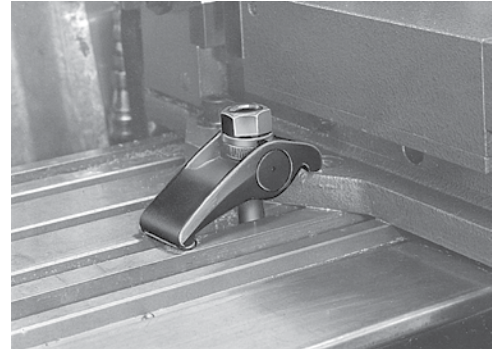
• Material: C-1030 or C-1035

Part Number	Bolt Size	A	B	C	D	E	F	G	H	J	Wt. (lbs)
37231	5/8 or M16	4	3/4	1 3/4	11/16	9/16	1 7/16	9/16	1/2	1/2	1.00
37232	5/8 or M16	6	7/8	2	11/16	11/16	1 11/16	11/16	5/8	9/16	2.00
37233	3/4 or M20	8	1 1/8	2 3/8	13/16	13/16	2	13/16	3/4	11/16	4.00
37234	7/8 or M24	10	1 1/4	2 3/4	15/16	15/16	2 5/16	15/16	7/8	3/4	6.50
37235	1 or M24	12	1 3/8	3 1/4	1 1/16	1 1/16	2 11/16	1/16	1	13/16	9.00

Part Number	Bolt Size	A	B	C	D	E	F	G	H	J	Wt. (Kg)
37231	M16	100	19	44	17	14	37	14	13	13	.53
37232	M16	150	22	50	17	17	43	17	16	14	1.1
37233	M20	200	29	59	21	21	50	21	19	17	2.2
37234	M24	250	32	70	24	24	59	24	22	19	3.5
37235	M24	300	35	83	27	27	68	27	25	21	4.9



Forged Adjustable Clamps



Forged Adjustable Clamps automatically compensate for clamping height changes within their clamping ranges (see chart for ranges). The swivel bushing is permanently mounted in the clamp which alleviates lost or missing parts. The standard brass heel plate protects the machine table.

Forged Adjustable Clamp holding one side of a hydraulic vise on a milling machine table.

- Material: 1137 Forged Steel, Heat Treated
- Finish: Black Oxide
- One Piece Construction
- Versatile Clamping Height
- Made in U.S.A.

Features high quality forging providing superior clamping strength.

Part Number	Bolt Size	Clamping Range	W	T	L	X	Maximum Torque (ft-lbs)	Max Holding* Force (lbs)	Wt. (lbs)
19101	1/2	0-2	1 3/4	1 1/2	4 1/4	2 1/2	90	6800	1.1
19102	5/8	0-2 3/8	2	1 5/8	5	3	180	10600	1.7
19103	3/4	0-2 3/4	2 1/2	1 3/4	6 1/4	3 3/4	300	16000	3.0
19104	7/8	0-3 1/2	3	2 3/8	7	4 1/4	500	21800	5.3
19104	1	0-3 1/2	3	2 3/8	7	4 1/4	760	28600	5.3

Metric

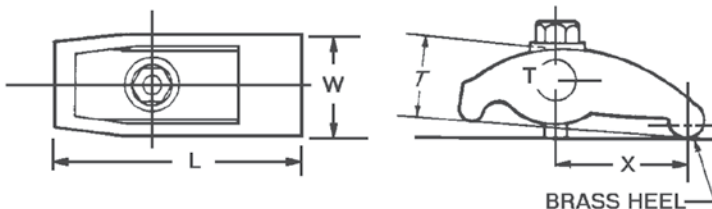
Part Number	Bolt Size	Clamping Range	W	T	L	X	Maximum Torque (N.m)	Max Holding* Force (Kgf)	Wt. (Kg)
19101	M12	0-50	44	38	108	63	100	2800	0.60
19102	M16	0-60	50	41	125	75	260	5250	0.92
19103	M20	0-70	63	44	159	95	500	8250	1.60
19104	M24	0-89	75	60	175	108	870	11850	2.90

* Note: Holding forces are based on using Jergens heat treated alloy steel T-slot bolts, Studs, T-nuts and Flange nuts in order at the recommended torque.



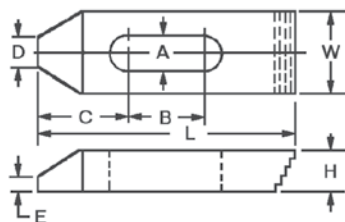
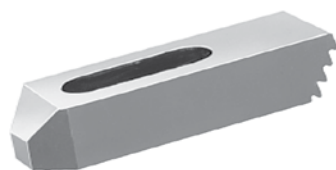
Accessories Available

T-Slot Bolts	Flange Nuts	T-Slot Nuts	Studs	Washers
Page 262	Page 264	Page 269	Page 259	Page 270





Steel Heel Straps Coarse Pitch

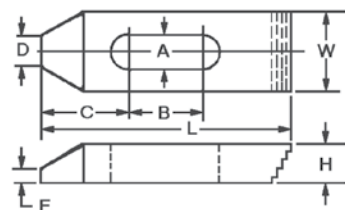
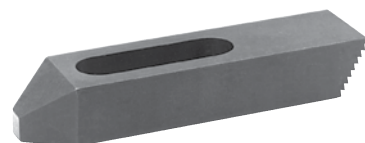


The step teeth of the Coarse Pitch Steel Heel Straps match the Jergens Aluminum Step Blocks. These straps facilitate easier height adjustments on set-ups.

- Material: Low Carbon Steel
- Finish: Black Oxide
- Heat Treat: Case Hardened Rockwell 30N 50-54

Part Number	Bolt Size	A	B	C	D	E	H	L	W	Wt. (lbs)
46814	1/2 or M12	17/32	1/2	1 1/16	1/2	1/4	5/8	2 1/2	1 1/4	.46
46815	1/2 or M12	17/32	1 1/4	1 3/16	1/2	1/4	3/4	4	1 1/4	.65
46816	1/2 or M12	17/32	2	1 5/16	1/2	1/4	7/8	6	1 1/4	.95
46817	5/8 or M16	21/32	1/2	1 3/16	5/8	1/4	5/8	3	1 1/4	.66
46818	5/8 or M16	21/32	1 1/4	1 3/16	5/8	3/8	3/4	5	1 1/2	.93
46819	5/8 or M16	21/32	2	1 5/16	5/8	3/8	7/8	7	1 1/2	1.36
46820	3/4 or M20	25/32	3/4	1 5/16	5/8	3/8	3/4	4	1 1/2	1.39
46821	3/4 or M20	25/32	1 1/2	1 1/2	5/8	3/8	1	6	1 1/2	1.94
46822	3/4 or M20	25/32	2 1/4	1 5/8	5/8	3/8	1 1/8	8	1 3/4	2.48

Fine Pitch



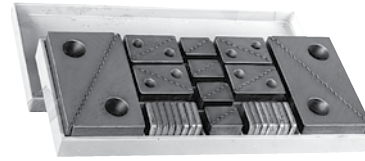
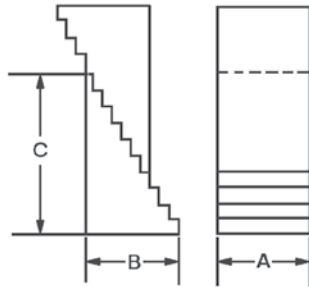
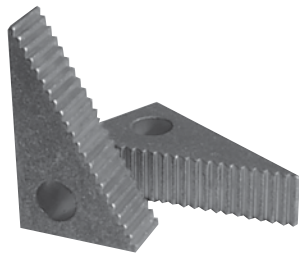
The step teeth of the Fine Pitch Steel Heel Straps match the Jergens Steel Step Blocks. These straps facilitate easier height adjustment on set-ups.

- Material: Low Carbon Steel
- Finish: Black Oxide
- Heat Treat: Case Hardened Rockwell 30N 50-54

Part Number	Bolt Size	A	B	C	D	E	H	L	W	Wt. (lbs)
46834	1/2 or M12	9/16	1/2	1 1/16	1/2	1/4	1/2	2 1/2	1 1/8	.46
46835	1/2 or M12	9/16	1 1/4	1 3/16	1/2	1/4	3/4	4	1 1/4	.65
46836	1/2 or M12	9/16	2	1 5/16	1/2	1/4	7/8	6	1 1/4	.95
46837	5/8 or M16	11/16	1/2	1 3/16	5/8	1/4	5/8	2 1/2	1 1/4	.66
46838	5/8 or M16	11/16	1 1/4	1 3/16	5/8	3/8	3/4	4	1 1/2	.93
46839	5/8 or M16	11/16	2	1 5/16	5/8	3/8	7/8	6	1 1/2	1.36
46840	3/4 or M20	13/16	3/4	1 5/16	5/8	3/8	3/4	4	1 1/2	1.39
46841	3/4 or M20	13/16	1 1/2	1 1/2	5/8	3/8	1	6	1 5/8	1.94
46842	3/4 or M20	13/16	2 1/4	1 5/8	5/8	3/8	1 1/8	8	1 3/4	2.48



Adjustable Step Blocks Aluminum — Coarse Pitch



1" & 2" Wide Adjustable Step Block Kits

Step blocks are made of aluminum to prevent damage to machine table surfaces.

Tooth design has no sharp edges which helps to prevent burrs and chip build-up in the steps. Blocks are completely interchangeable with each other, and with the Jergens Coarse Pitch Step Straps.

Standard (1" Width) Kit 21701

Included in Kit:

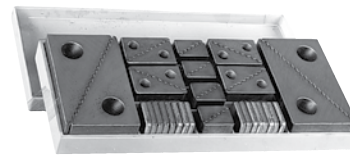
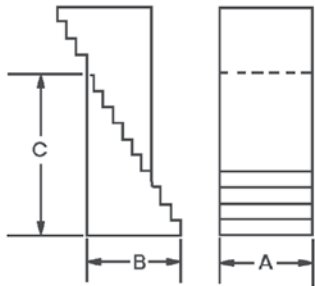
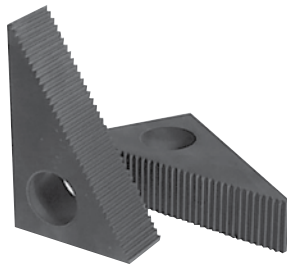
Qty Per Kit	Part Number (Blocks Only)	A	B	C	Step Elevation	Wt. (lbs)
8	21705	1	5/8	1 1/16	11/64	.03
8	21702	1	1	1 3/4	11/64	.09
4	21703	1	2 3/16	3 3/4	11/64	.39
16	21706	Protective Pad			11/64	.02

Heavy Duty (2" Width) Kit 21711

Included in Kit:

Qty Per Kit	Part Number (Blocks Only)	A	B	C	Step Elevation	Wt. (lbs)
8	21712	2	5/8	1 1/16	11/64	.06
8	21713	2	1	1 3/4	11/64	.18
4	21714	2	2 3/16	3 3/4	11/64	.78
16	21715	Protective Pad			11/64	.04

Steel — Fine Pitch



Adjustable Step Block Kit 21821

Included in Kit:

Qty Per Kit	Part Number (Blocks Only)	A	B	C	Step Elevation	Wt. (oz)
8	21831	1	5/8	1 1/8	3/32	2
8	21832	1	1 1/16	1 3/4	3/32	4
4	21833	1	2 3/8	3 7/8	3/32	14
16	21706	Protective Aluminum Pad				

Step Blocks sold individually.

Adjustable Step Block Kit

Blocks are completely interchangeable with each other, and with the Jergens Fine Pitch Step Straps.

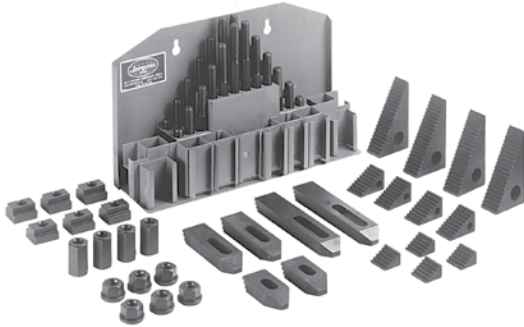


60-Piece Set-Up Kits Aluminum Step Blocks

Each 60-Piece Set-Up Kit is supplied with either a non-marring wooden base or a heavy duty steel holder. Tooth design has no sharp edges, which helps to prevent burrs and chips from building up on the steps. The aluminum blocks will not mar precision machine tables.

Each Set-Up-Kit Includes:

- Six Table Saver T-Nuts
- Six Flange Nuts
- Six Step Heel Straps
- Four Coupling Nuts
- Twenty-four Studs:
Four each of 3", 4", 5", 6" 7", 8" lengths
- Twelve Course Pitch Aluminum Step Blocks
- One Metal Holder



Kit with Metal Holder

Part Number Metal Holder	Stud T-Slot Width	Thread Size	Strap Lengths	Wt (lbs)
45105	9/16	1/2-13	2 1/2, 4, 6	20
45106	5/8	1/2-13	2 1/2, 4, 6	20
45104	11/16	1/2-13	2 1/2, 4, 6	20
45108	11/16	5/8-11	3, 5, 7	30
45109	3/4	5/8-11	3, 5, 7	30
45107	13/16	5/8-11	3, 5, 7	30

Metal kit holders are also sold separately.
Same holder used for both kits.

1/2" Metal Holder
45116

5/8" Metal Holder
45117

60-Piece Set-Up Kits Steel Step Blocks

Each 60-Piece Set-Up Kit is supplied with heavy duty steel holder. The fine pitch steel blocks are compatible with other standard step blocks and straps.

NOTE: The fine pitch blocks are not compatible with the Jergens course pitch aluminum blocks.

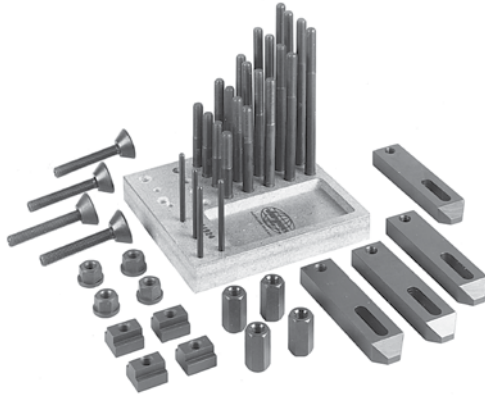
Each Set-Up Kit Includes:

- Six Table Saver T-Nuts
- Six Flange Nuts
- Six Step Heel Straps
- Four Coupling Nuts
- Twenty-four Studs:
Four each 3", 4", 5", 6", 7", 8" lengths
- Twelve Fine Pitch Steel Step Blocks
- One Metal Holder

Part Number Metal Holder	Stud T-Slot Width	Thread Size	Strap Lengths	Wt. (lbs)
45205	9/16	1/2-13	2 1/2, 4, 6	20
45206	5/8	1/2-13	2 1/2, 4, 6	20
45204	11/16	1/2-13	2 1/2, 4, 6	20
45208	11/16	5/8-11	2 1/2, 4, 6	30
45209	3/4	5/8-11	2 1/2, 4, 6	30
45207	13/16	5/8-11	2 1/2, 4, 6	30



40-Piece Clamping Kit



Contains the same quality components as the larger kits but without the step blocks and step heel straps. This Clamping Kit includes taper nose straps, T-nuts, coupling nuts, flange nuts, clamping heels and studs.

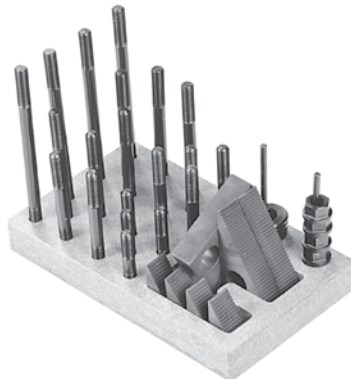
Each Clamping Kit Includes:

- Four Table Saver T-Nuts
- Twenty Studs:
Four Each 4", 5", 6", 7", 8" lengths
- Four Adjustable Clamp Heels
- Four Flange Nuts
- Four Coupling Nuts
- Four Taper Nose Straps
- One Wooden Holder (†)

Part Number	T-Slot Width	Stud Thread Size	Strap Clamp	Adjustable Clamp Heel	Wt. (lbs)
45022 †	7/16*	3/8-16	5/8 x 1 1/4 x 5	3/8-16 x 3	12
45023 †	1/2	3/8-16	5/8 x 1 1/4 x 5	3/8-16 x 3	12
45021	9/16	3/8-16	5/8 x 1 1/4 x 5	3/8-16 x 3	12
45025	9/16*	1/2-13	7/8 x 1 1/4 x 6	1/2-13 x 4	20
45026	5/8	1/2-13	7/8 x 1 1/4 x 6	1/2-13 x 4	20
45024	11/16	1/2-13	7/8 x 1 1/4 x 6	1/2-13 x 4	20
45028 †	11/16*	5/8-11	7/8 x 1 1/2 x 7	5/8-11 x 5	30
45029 †	3/4	5/8-11	7/8 x 1 1/2 x 7	5/8-11 x 5	30
45027 †	13/16	5/8-11	7/8 x 1 1/2 x 7	5/8-11 x 5	30
45031	13/16*	3/4-10	1 x 1 1/2 x 6	3/4-10 x 6	40
45032	7/8	3/4-10	1 x 1 1/2 x 6	3/4-10 x 6	40
45030	1 1/16	3/4-10	1 x 1 1/2 x 6	3/4-10 x 6	40

*T-Nuts not hardened due to thin wall.
† Includes Wood Holder.

Die Set-Up Kits



These Die Set-Up Kits can be used with any of the Jergens heavy duty straps; however, the kits are best suited for use with forged strap clamps found on pages 284 thru 286.

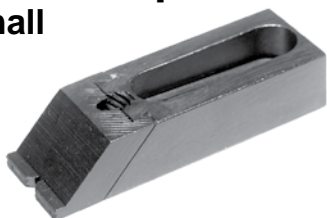
Each Kit includes:

- Four Flange Nuts
- Four Heavy Duty Washers
- Twelve Steel Step Blocks
- Twenty Studs
- One Wooden Holder

Thread Size	Part Number	Stud Lengths
1/2-13	44921	3, 4, 5, 6, 8
5/8-11	44922	3, 4, 5, 6, 8
3/4-10	44923	4, 5, 6, 8, 10



Toe Clamps Small

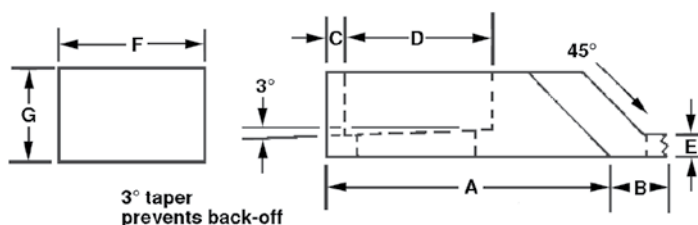


Jergens Feature:

3° Taper Prevents Back-off

Toe Clamps are powerful, low profile clamps that grip on the side of the workpiece leaving the top surface open. This minimizes interference with cutting tools or measuring instruments. Ideal for use on mills, planers, jig borers, drill presses, and faceplates.

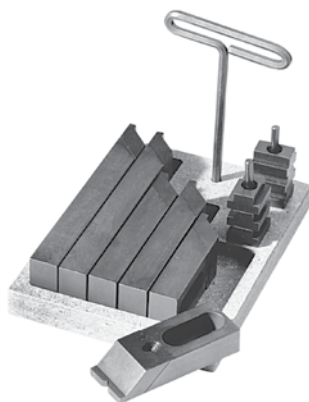
- Steel or brass toe and special washer are included with each clamp
- Slotted for 5/16 or M8 Cap Screws
- Case hardened for maximum wear
- Black Oxide finish



Part Number	Toe Material	Toe Style	A	B	C	D	E	F	G	Wt. (lbs)	Toe Only
46921	STEEL	STANDARD	1 1/2	1/2	1/16	3/4	1/8	1	5/8	.24	46952
46971	STEEL	HIGH GRIP	1 1/2	1/2	1/16	3/4	5/8	1	5/8	.26	46948
46922	STEEL	STANDARD	2	1/2	1/16	1 1/4	1/8	1	5/8	.30	46952
46972	STEEL	HIGH GRIP	2	1/2	1/16	1 1/4	5/8	1	5/8	.32	46948
46923	STEEL	STANDARD	2 1/2	1/2	1/16	1 3/4	1/8	1	5/8	.35	46952
46973	STEEL	HIGH GRIP	2 1/2	1/2	1/16	1 3/4	5/8	1	5/8	.37	46948

* Replacement Parts available, contact customer service.

Small Toe Clamp Kits



Each Clamp Kit Includes:

- Six Toe Clamps: Two of each length (1 1/2", 2", 2 1/2")
- Six Low Grip Steel Toes
- Six Toe Clamp Nuts
- Six Protective Washers
- One T-Wrench
- One Wooden Holder

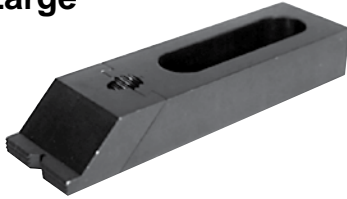
Part Number	Table Slot	Toe Clamps	Toe Clamp Nuts	Washers	lbs Per Kit
44901	3/8	46921, 46922, 46923	46931	46942	3
44902	7/16	46921, 46922, 46923	46932	46942	3
44903	1/2	46921, 46922, 46923	46933	46942	3
44904	9/16	46921, 46922, 46923	46934	46942	3
44905	5/8	46921, 46922, 46923	46935	46942	3

Slotted for 5/16" or M8 Socket Head Cap Screws

* Replacement Parts available, contact customer service.



Toe Clamps Large

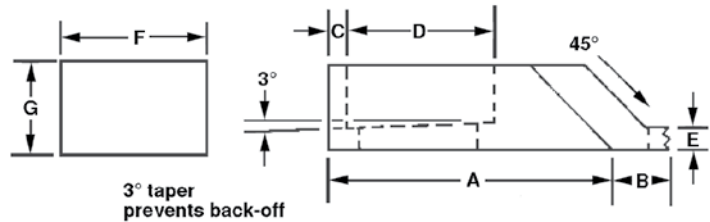


Jergens Feature:

3° Taper Prevents Back-off

Toe Clamps are powerful, low profile clamps that grip on the side of the workpiece leaving the top surface open. This minimizes interference with cutting tools or measuring instruments. Ideal for use on mills, planers, jig borers, drill presses, and faceplates.

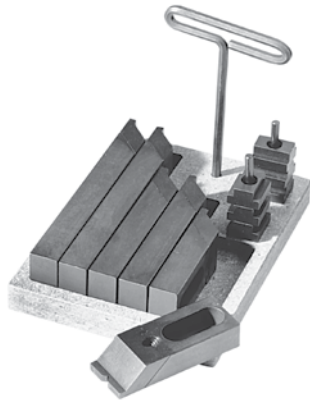
- Steel or brass toe and special washer are included with each clamp.
- Slotted for 1/2" or M12 Cap Screws
- Low Carbon Steel hardened for maximum wear
- Black Oxide finish



Part Number	Toe Material	Toe Style	A	B	C	D	E	F	G	Wt. (lbs)	Toe Only
46926	STEEL	STANDARD	3 1/4	13/16	1/8	2	1/4	1 1/2	7/8	1.0	46953
46976	STEEL	HIGH GRIP	3 1/4	13/16	1/8	2	7/8	1 1/2	7/8	1.3	46949
46927	STEEL	STANDARD	4 11/16	13/16	1/2	2 3/4	1/4	1 1/2	7/8	1.4	46953
46977	STEEL	HIGH GRIP	4 11/16	13/16	1/2	2 3/4	7/8	1 1/2	7/8	1.7	46949
46928	STEEL	STANDARD	6 5/8	13/16	1	3 3/4	1/4	1 1/2	7/8	2.0	46953
46978	STEEL	HIGH GRIP	6 5/8	13/16	1	3 3/4	7/8	1 1/2	7/8	2.3	46949

* 5/8 or M16 Cap Screw Slot and replacement parts available, contact customer service.

Large Toe Clamp Kits



Each Clamp Kit Contains:

- Six Toe Clamps: Two of each length (3 1/4", 4 11/16", 6 5/8")
- Four Low Grip Steel Toes
- Six Toe Clamp Nuts
- Six Protective Washers
- One T-Wrench
- One Wooden Holder

Part Number	Table Slot	Toe Clamps	Toe Clamp Nuts	Washers	lbs Per Kit
44906	9/16	46926, 46927, 46928	46936	46943	11
44907	5/8	46926, 46927, 46928	46937	46943	12
44909	11/16	46926, 46927, 46928	46938	46943	12
44910	13/16	46926, 46927, 46928	46939	46943	13
44911	7/8	46926, 46927, 46928	46940	46943	14
44912	1	46926, 46927, 46928	46941	46943	15

Slotted for 1/2" or M12 Socket Head Cap Screws

* 5/8 or M16 Cap Screw Slotted Kits and replacement parts available, contact customer service.